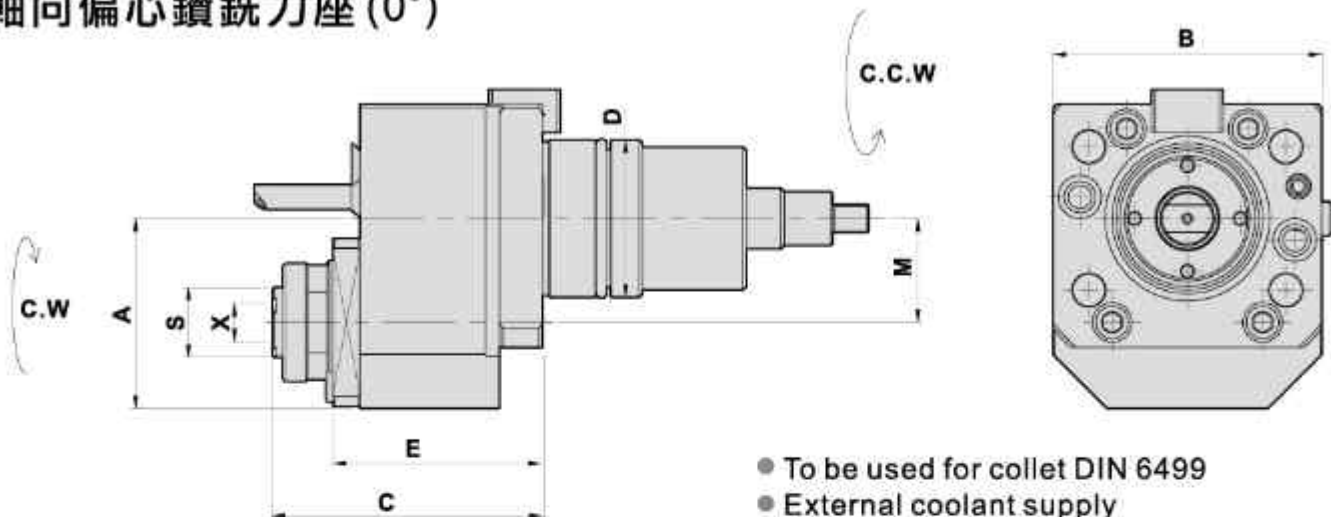


AXIAL MILLING AND DRILLING HEAD OFFSET

TYPE NAKAMURA

軸向偏心鑽銑刀座 (0°)



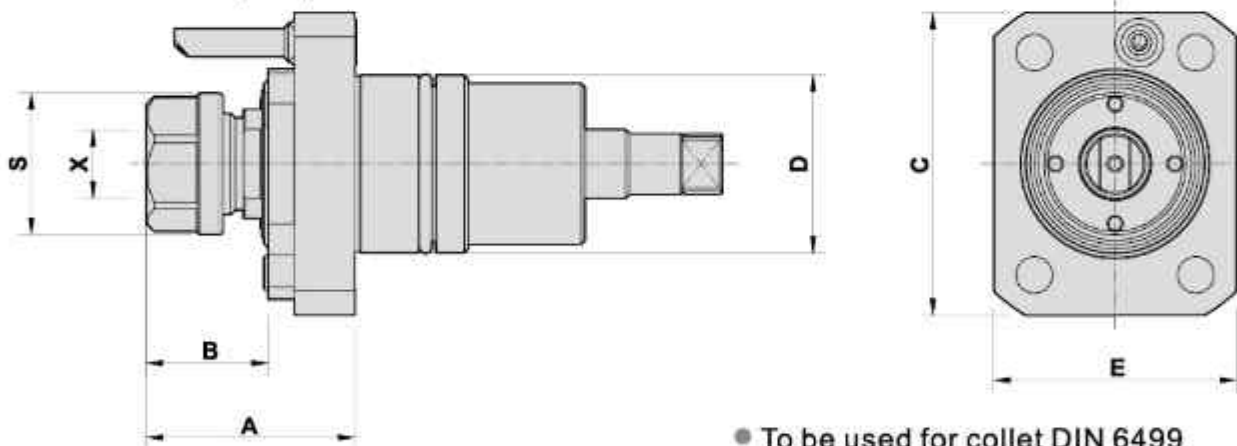
- To be used for collet DIN 6499
- External coolant supply
- Collet is not included
- ★ 2倍增速

DIMENSIONS

Models	D	X Capacity	S	Maximum R.P.M.	i	A	B	C	E	M	Code No.	Order No.	(Kg) Weight
WT-100	44	1-10 ER16A	19.5	10000	1:2	53	75	75.5	58.5	29	1441GB-000	DA44NA-16A-29/I	2.9
WT-300	65	2-20 ER32A	37.7	10000	1:2	81	96	105	78	50	1651GW-000	DA65NA-32A-50/I	7.6

AXIAL MILLING AND DRILLING HEAD

軸向鑽銑刀座 (0°)



- To be used for collet DIN 6499
- External coolant supply
- Collet is not included

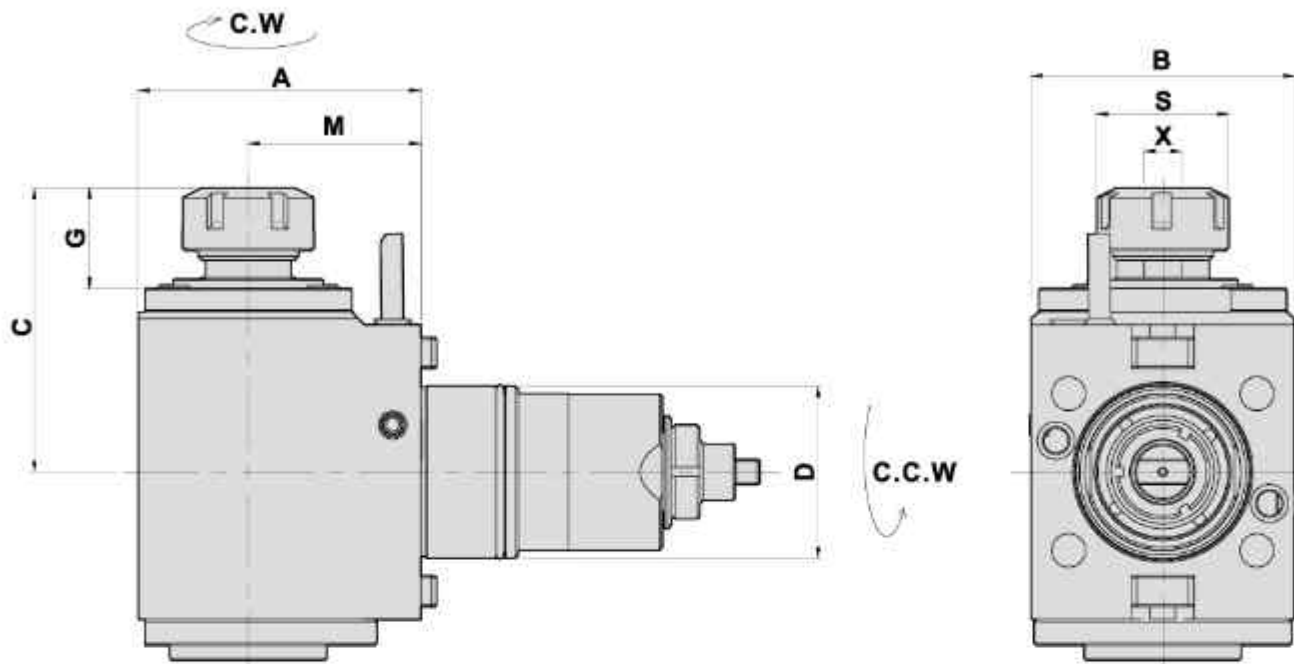
DIMENSIONS

Models	D	X Capacity	S	Maximum R.P.M.	A	B	C	E	Code No.	Order No.	(Kg) Weight
WT-100	44	1-13 ER20	35	6000	52	30	75	60	1441GA-000	DA44NA-ER20	1.4
WT-100	44	1-16 ER25	42	6000	58	37	75	60	1441GJ-000	DA44NA-ER25	1.5
WT-150	55	1-10 ER16M	22	6000	91	77	84	79	1551GE-000	DA55NA-ER16M-L	2.1
WT-150	55	1-16 ER25	42	6000	51	30	84	79	1551GA-000	DA55NA-ER25	2.1
WT-150	55	2-20 ER32	50	6000	62	41	84	79	1551GB-000	DA55NA-ER32	2.1
WT-300	65	2-20 ER32	50	6000	57	35	100	96	1651GA-000	DA65NA-ER32	3.2

RADIAL MILLING AND DRILLING HEAD

TYPE NAKAMURA

徑向鑽銑刀座 (90°)



- To be used for collet DIN 6499
- External coolant supply
- Collet is not included

DIMENSIONS

Models	D	X Capacity	S	Maximum R.P.M.	i	A	B	C	G	M	Code No.	Order No.	(Kg) Weight
WT-100	44	1-13 ER20	35	5000	1:1	92	75	84	30	60	2441GA-000	DF44NA-20-60	4.6
WT-100	44	1-13 ER20	35	10000	1:2	88	75	84	30	60	*2441GK-000	DF44NA-20-60I	4.2
WT-100	44	1-13 ER20	35	5000	1:1	107	75	84	30	75	2441GL-000	DF44NA-20-75	5.1
WT-100	44	1-16 ER25	42	5000	1:1	92	75	92	38	60	2441GN-000	DF44NA-25-60	4.7
WT-150	55	1-16 ER25	42	5000	1:1	90	84	91	32	55	2551GA-000	DF55NA-25-55	6.4
WT-150	55	1-22 ER32	50	5000	1:1	90	84	102	41	55	2551GG-000	DF55NA-32-55	6.6
WT-150	55	1-16 ER25	42	10000	1:2	90	84	88	30	55	*2551GE-000	DF55NA-25-55I	6.1
WT-150	55	1-16 ER25	42	5000	1:1	100	84	91	32	65	2551GN-000	DF55NA-25-65	7
WT-300	65	2-20 ER32	50	5000	1:1	106	96	104	38	65	◎2651GA-000	DF65NA-32-65	9.2
WT-300	65	2-20 ER32	50	10000	1:2	106	96	107	38	65	*2651GW-000	DF65NA-32-65I	8.9

* 2倍增速 ◎ 轉向為C.W.-C.W.

RADIAL TAPPING HEADS

徑向彈性攻牙刀座 (90°)

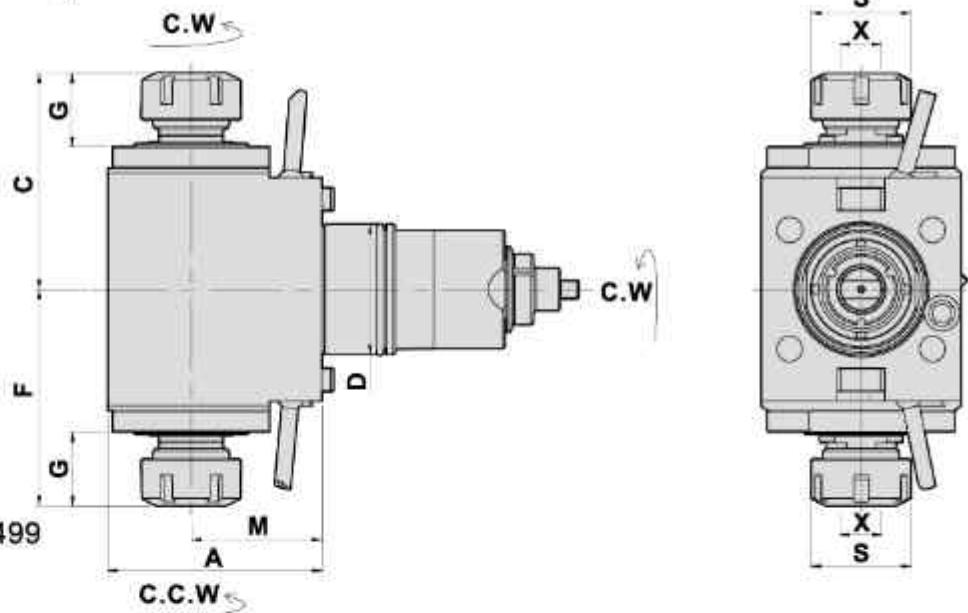
DIMENSIONS

Models	D	X Capacity	S	Maximum R.P.M.	A	B	C	F	G	M	Code No.	Order No.	(Kg) Weight
WT-100	44	1-10 ER16	30	3000	92	75	90.5	48.5	37	60	2441GF-000	TDF44NA-16-60	4.6

RADIAL MILLING AND DRILLING HEAD DOUBLE HEADS

TYPE NAKAMURA

徑向雙頭鑽銑刀座 (90°)



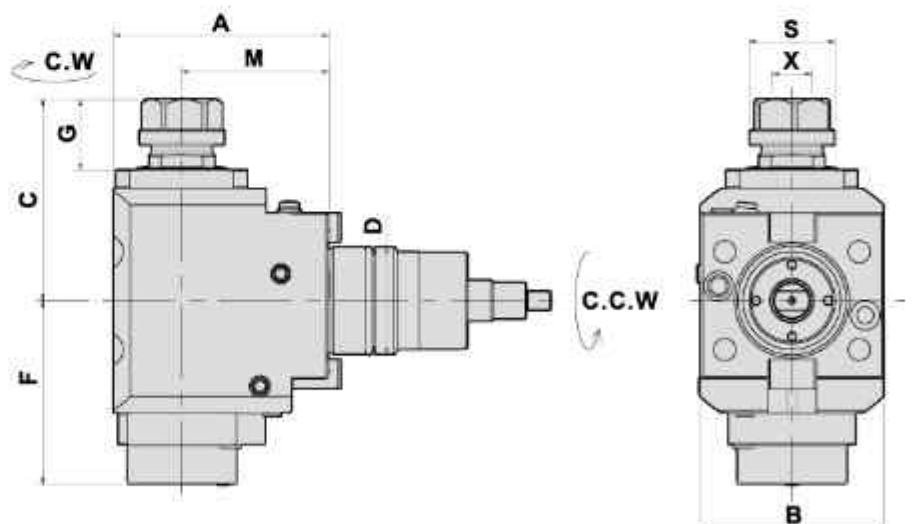
- To be used for collet DIN 6499
- External coolant supply
- Collet is not included

DIMENSIONS

Models	D	X Capacity	S	Maximum R.P.M.	A	B	C	F	G	M	Code No.	Order No.	(Kg) Weight
WT-150	55	1-16 ER25	42	5000	90	84	91	91	31	55	2551GC-000	DF55NA-25-55D	6.8
WT-300	65	2-20 ER32	50	5000	106	96	97	97	34	65	2651GC-000	DF65NA-32-65D	8.9

RADIAL MILLING AND DRILLING HEAD

徑向鑽銑刀座 (90°)



- To be used for collet DIN 6499
- Internal coolant supply: 50bar
中心出水
- Collet is not included

DIMENSIONS

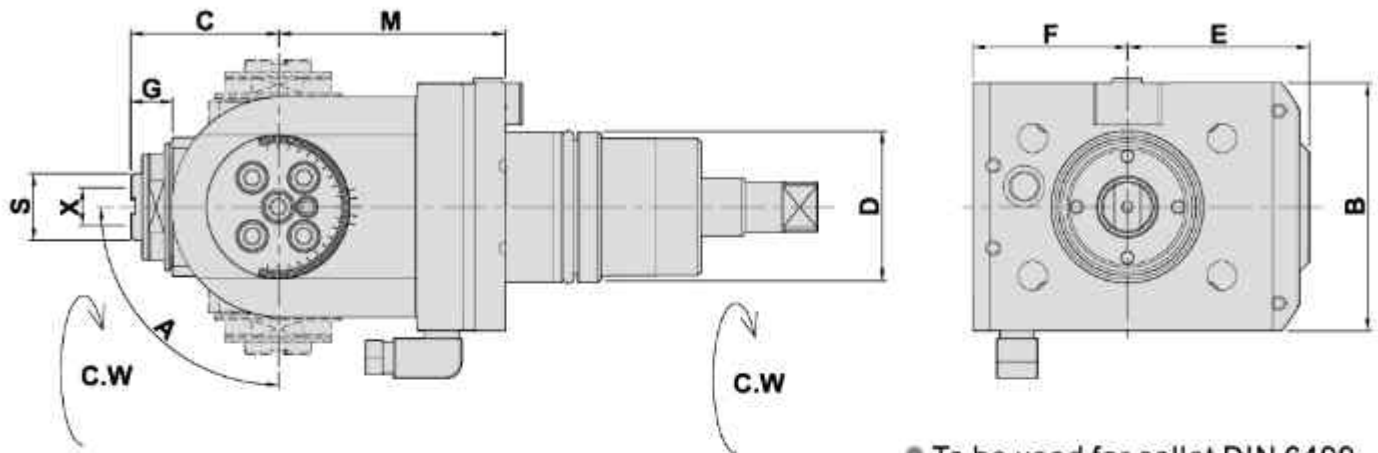
Models	D	X Capacity	S	Maximum R.P.M.	A	B	C	F	G	M	Code No.	Order No.	(Kg) Weight
WT-100	44	1-13 ER20	35	5000	92	75	82.5	68	29	60	2441GB-000	CW-DF44NA-20-60	4.8
WT-100	44	1-13 ER20	35	10000	88	75	82.5	75	29	60	*2441GD-000	CW-DF44NA-20-60/I	4.7
WT-100	44	1-13 ER20	35	5000	107	75	84	68	30	75	2441GM-000	CW-DF44NA-20-75	5.3
WT-150	55	1-16 ER25	42	5000	90	84	88	80	30	55	2551GB-000	CW-DF55NA-25-55	6.8

* 1:2 增速

ANGULAR HEAD

TYPE NAKAMURA

萬向鑽銑刀座



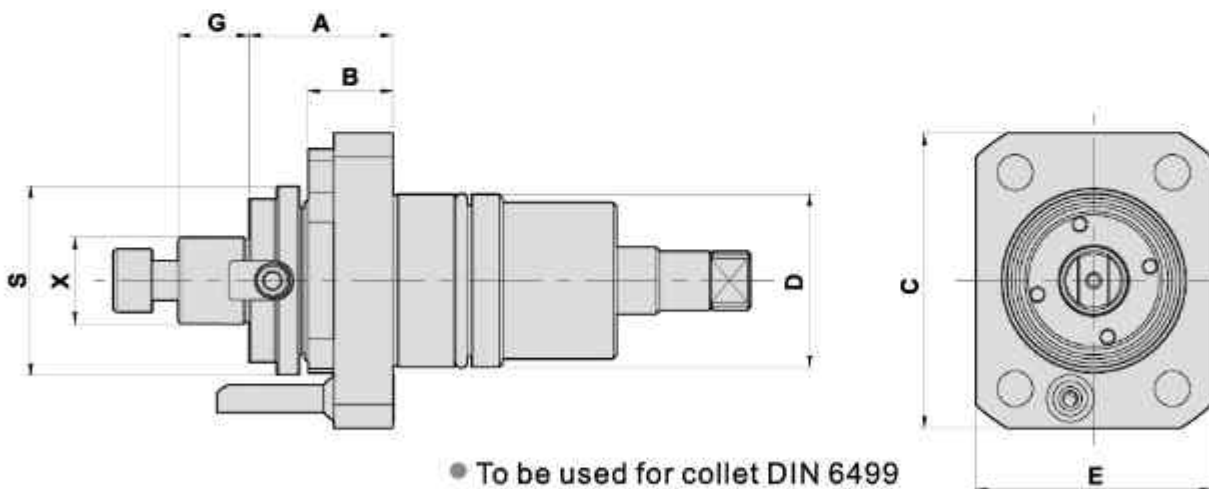
- To be used for collet DIN 6499
- External coolant supply
- Collet is not included

DIMENSIONS

Models	D	X Capacity	S	Maximum R.P.M.	A	B	C	E	F	G	M	Code No.	Order No.	(Kg) Weight
WT-100	44	1-10 ER16A	19.5	5000	±90°	72	43	53	45	12	66	1441GF-000	DA44NA-16BAC	3.8
WT-150	55	1-10 ER16A	19.5	5000	±90°	94	43	53	42	12	72	1551GG-000	DA55NA-16BAC	4.9

AXIAL MILLING AND DRILLING HEAD

軸向銑削刀座 (0°)



- To be used for collet DIN 6499
- External coolant supply
- Collet is not included

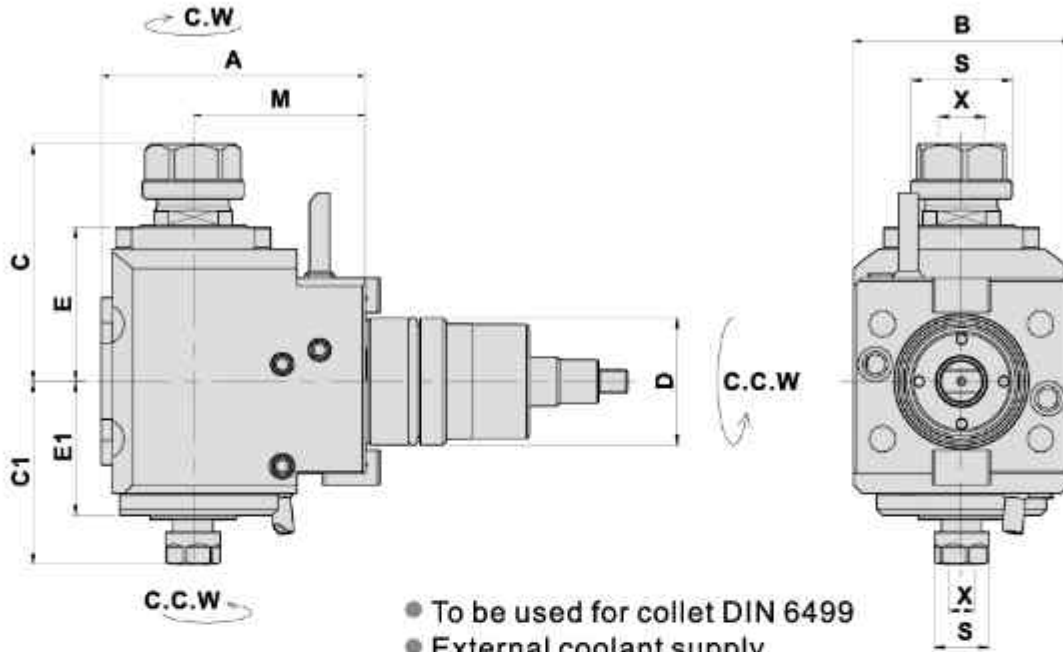
DIMENSIONS

Models	D	X DIN 6358	S	Maximum R.P.M.	A	B	C	E	G	Code No.	Order No.	(Kg) Weight
WT-100	44	22	48	6000	37	22	75	60	18	1441GE-000	DA44NA-22C	1.5
WT-150	55	22	48	6000	35	21	84	79	18	1551GD-000	DA55NA-22C	2.2
WT-300	65	22	48	6000	40	23	100	96	18	1651GT-000	DA65NA-22C	3.4

RADIAL MILLING AND DRILLING HEAD DOUBLE HEADS

TYPE NAKAMURA

徑向雙頭鑽銑刀座 (90°)

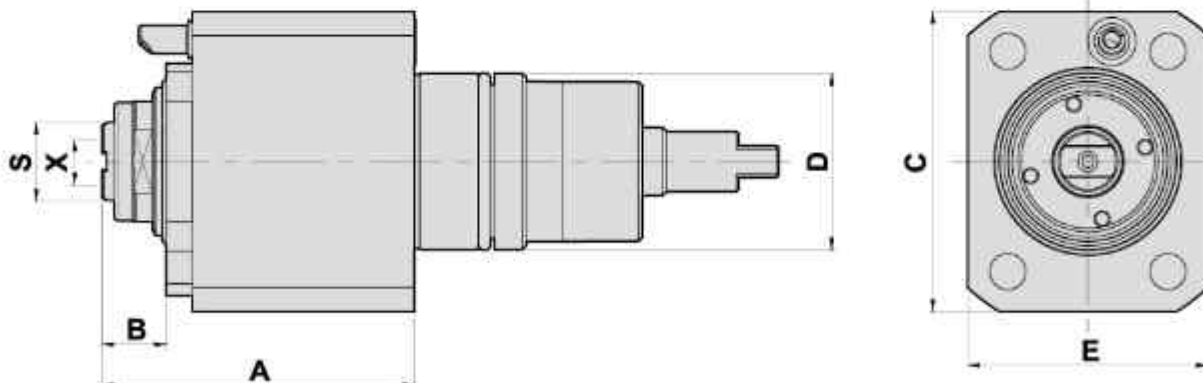


- To be used for collet DIN 6499
- External coolant supply
- Collet is not included

DIMENSIONS

Models	D	X Capacity	S	Maximum R.P.M.	A	B	C	C1	E	E1	M	Code No.	Order No.	(Kg) Weight
WT-100	44	1st-ER20 2nd-ER11	35 19	5000	92	75	82.5	63.5	53.5	46.5	60	2441GH-000	DF44NA-20-11-60D	4.5
WT-100	44	1st-ER20 2nd-ER11	35 19	5000	102	75	82.5	63.5	53.5	46.5	70	2441GG-000	DF44NA-20-11-70D	4.9

AXIAL MILLING AND DRILLING HEAD 軸向鑽銑刀座 (0°)



- To be used for collet DIN 6499
- Internal coolant supply: 15bar 中心出水
- Collet is not included

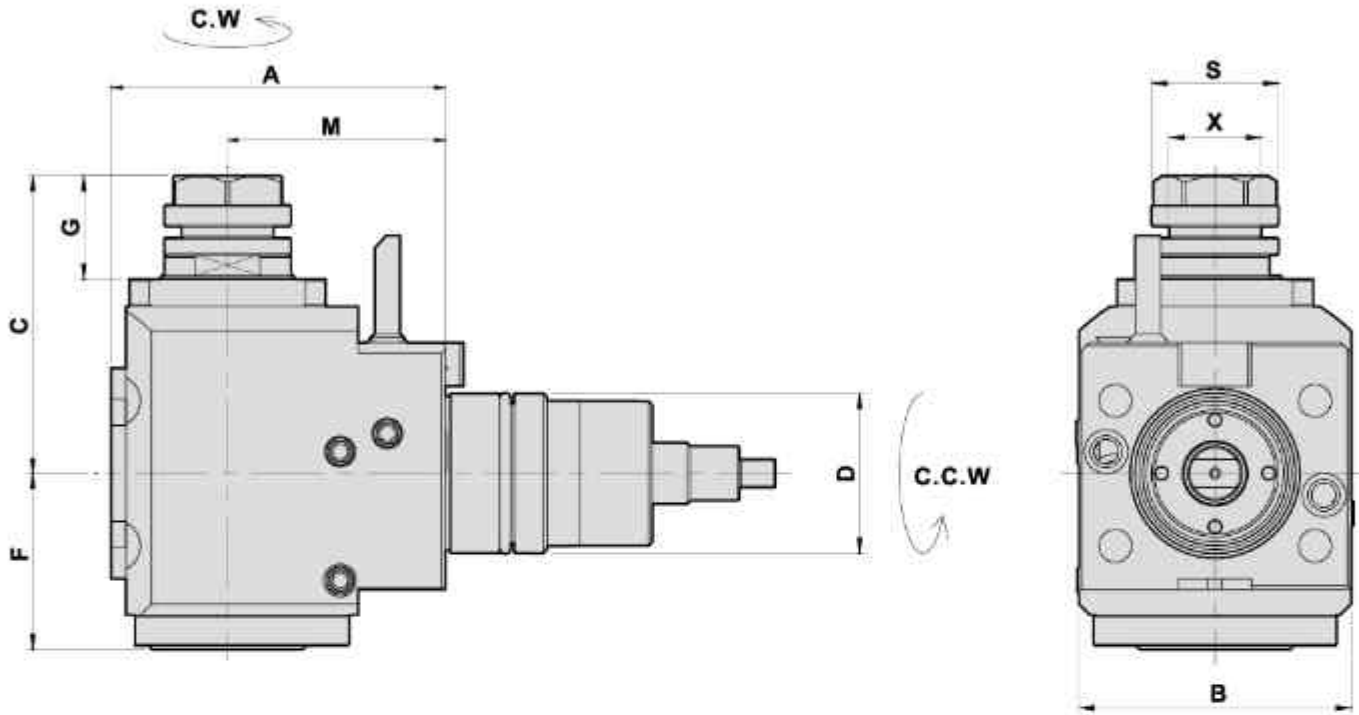
DIMENSIONS

Models	D	X DIN 6358	S	Maximum R.P.M.	A	B	C	E	Code No.	Order No.	(Kg) Weight
WT-100	44	1-10 ER16A	19.5	6000	78	16	75	60	1441GC-000	CW-DA44NA-ER16A	2.5

RADIAL SHELL END MILLING CUTTER

TYPE NAKAMURA

徑向銑削刀座 (90°)



- To be used for collet DIN 6499
- External coolant supply
- Collet is not included

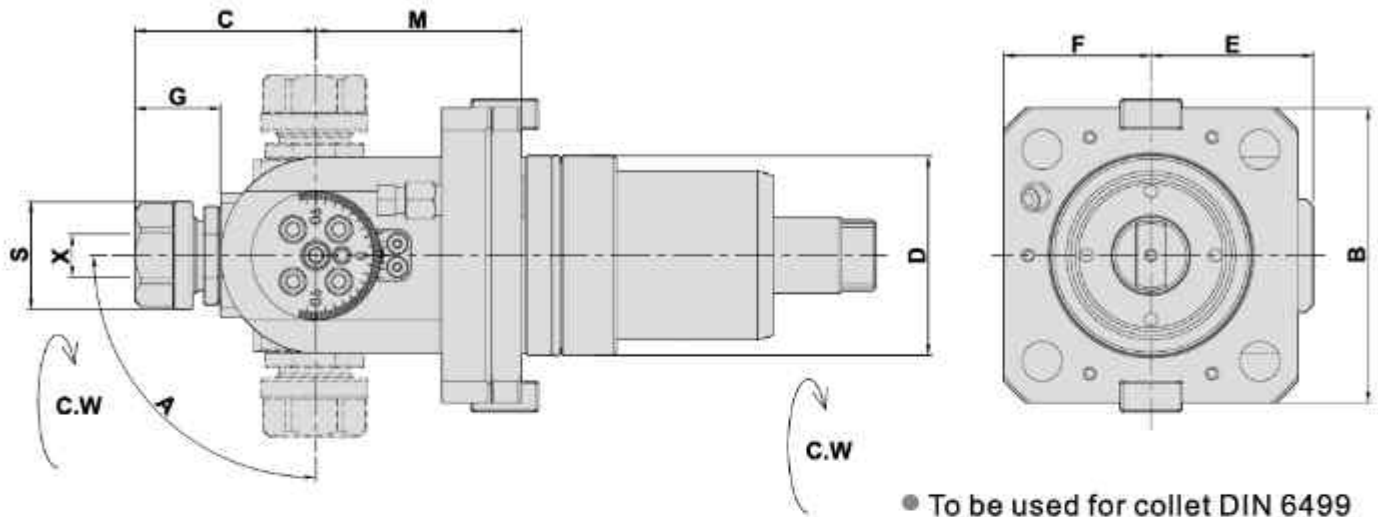
DIMENSIONS

Models	D	X	S	Maximum R.P.M.	A	B	C	F	G	M	Code No.	Order No.	(Kg) Weight
WT-100	44	25.4	35	5000	92	75	82	48.5	28.5	60	2441GE-000	DF44NA-25.4C-60	4.6

ANGULAR HEAD

TYPE NAKAMURA

萬向鑽銑刀座



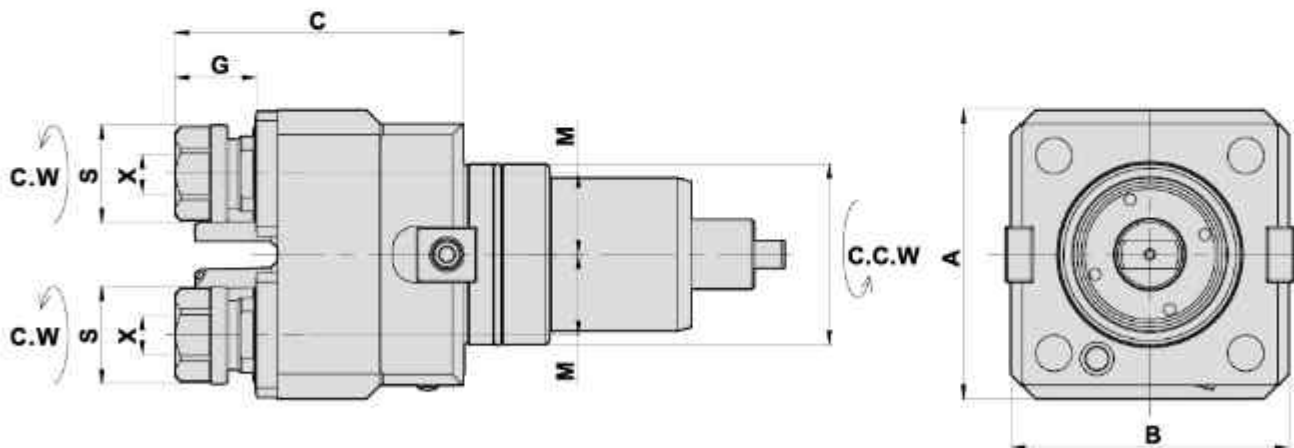
- To be used for collet DIN 6499
- External coolant supply
- Collet is not included

DIMENSIONS

Models	D	X Capacity	S	Maximum R.P.M.	A	B	C	E	F	G	M	Code No.	Order No.	(Kg) Weight
WT-150	55	1-13 ER20	35	5000	±90°	94	59	53	42	28	72	1551KG-000	DA55NA-20B	5.2
WT-300	65	1-13 ER20	35	5000	±90°	96	59	53	48	28	67	1651GR-000	DA65NA-20B	5.2

AXIAL MILLING AND DRILLING HEAD DOUBLE HEADS Y OFFSET

軸向鑽銑刀座-雙頭Y軸偏心 (0°)



- To be used for collet DIN 6499
- External coolant supply
- Collet is not included

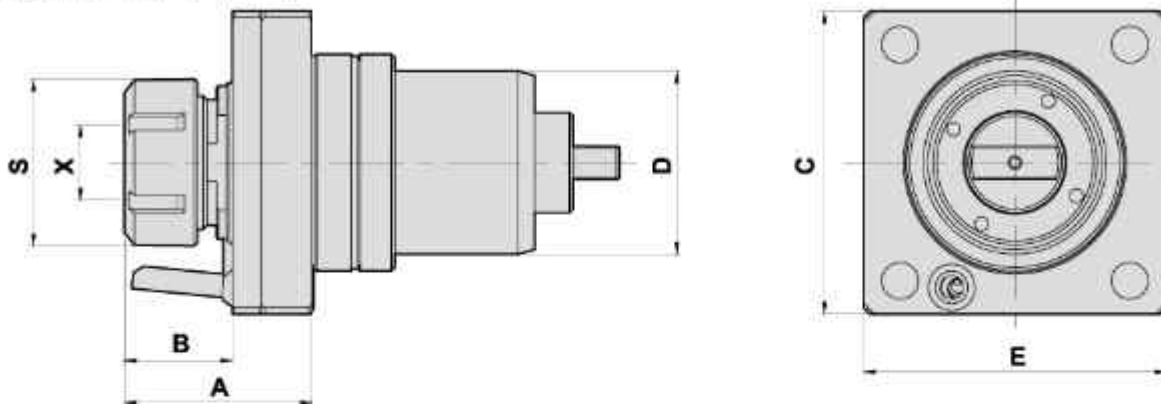
DIMENSIONS

Models	D	X Capacity	S	Maximum R.P.M.	A	B	C	G	M	Code No.	Order No.	(Kg) Weight
WT-300	65	1-13 ER20	35	6000	104	100	104	29	29	1651GU-000	DA65NA-20DY	6.5

AXIAL MILLING AND DRILLING HEAD

TYPE NAKAMURA

軸向鑽銑刀座 (0°)



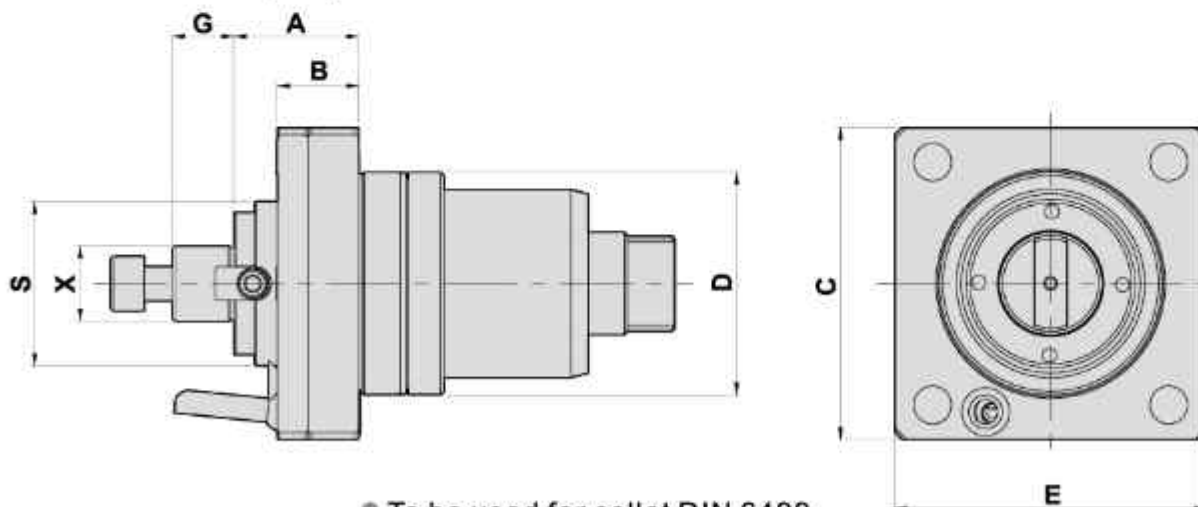
- To be used for collet DIN 6499
- External coolant supply
- Collet is not included

DIMENSIONS

Models	D	X Capacity	S	Maximum R.P.M.	A	B	C	E	Code No.	Order No.	(Kg) Weight
SUPER-WT-150 SUPER-WY-250L	65	1-13 ER20	35	6000	85	61	91	91	1651GP-000	SP-WT-150- DA65NA-ER20-L	3.1
	65	2-20 ER32	50	6000	57	33	91	91	1651GB-000	SP-WT-150- DA65NA-ER32-S	2.8
	65	2-20 ER32	50	6000	85	61	91	91	1651GC-000	SP-WT-150- DA65NA-ER32-L	3.3
	65	2-20 ER32	50	6000	56	32	91	91	1651GD-000	SP-WY-250- DA65NA-ER32	2.8

AXIAL SHELL END MILLING CUTTER

軸向銑削刀座 (0°)



- To be used for collet DIN 6499
- External coolant supply
- Collet is not included

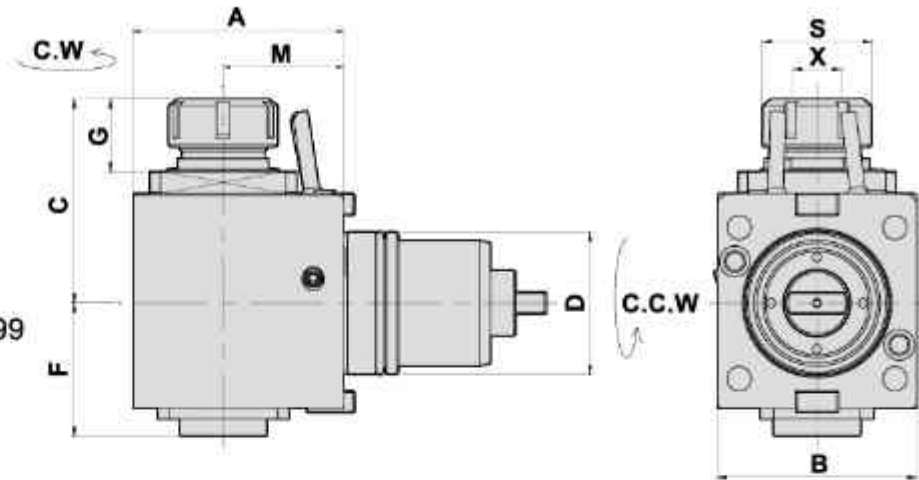
DIMENSIONS

Models	D	X DIN 6358	S	Maximum R.P.M.	A	B	C	E	G	Code No.	Order No.	(Kg) Weight
SUPER-WT-150 SUPER-WY-250L	65	22	48	6000	37	24	91	91	18	1651GE-000	SP-WY-250L- DA65NA-22C	3

RADIAL MILLING AND DRILLING HEAD

TYPE NAKAMURA

徑向鑽銑刀座 (90°)



- To be used for collet DIN 6499
- External coolant supply
- Collet is not included

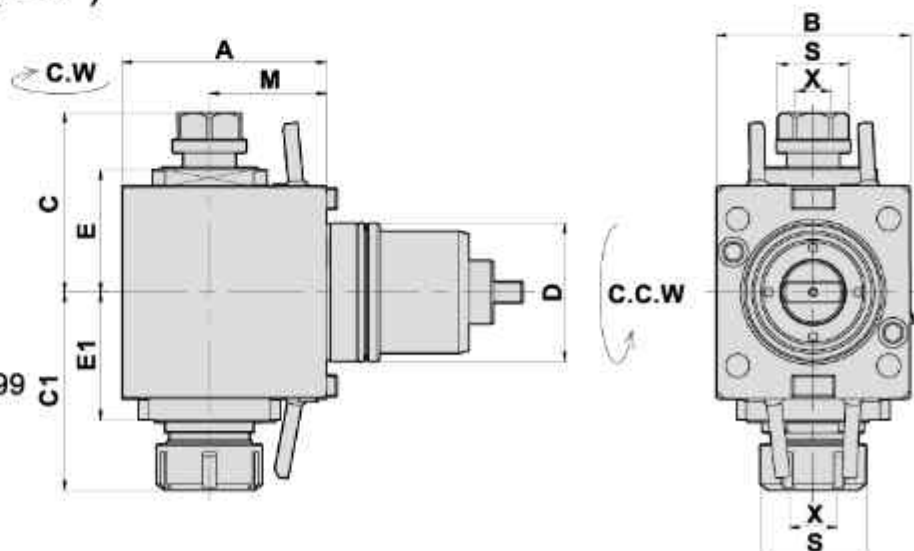
DIMENSIONS

Models	D	X Capacity	S	Maximum R.P.M.	A	B	C	F	G	M	Code No.	Order No.	(Kg) Weight
SUPER-WT-150 SUPER-WY-250L	65	1-16 ER25	42	5000	96	91	95	61	35	55	2651GN-000	SP-WT-150- DF65NA-25-55-S	7.7
	65	2-20 ER32	50	5000	96	91	94	61	34	55	2651GB-000	SP-WT-150- DF65NA-32-55-S	7.7
	65	2-20 ER32	50	5000	110	91	94	61	34	75	2651GT-000	SP-WT-150- DF65NA-32-75	8.7
	65	2-20 ER32	50	5000	96	91	94	62	34	55	2651GV-000	* SP-WT-150-TA- DF65NA-32-55	7.8
	65	2-20 ER32	50	5000	96	91	94	61	34	55	2651GH-000	SP-WY-250L- DF65NA-32-55	7.7
	65	2-20 ER32	50	3000	96	91	96	64	36	55	2651GL-000	* SP-WY-250L- DF65NA-32-55-T	7.9

* 重切削 HEAVY CUTTING

RADIAL MILLING AND DRILLING HEAD DOUBLE HEADS

徑向雙頭鑽銑刀座 (90°)



- To be used for collet DIN 6499
- External coolant supply
- Collet is not included

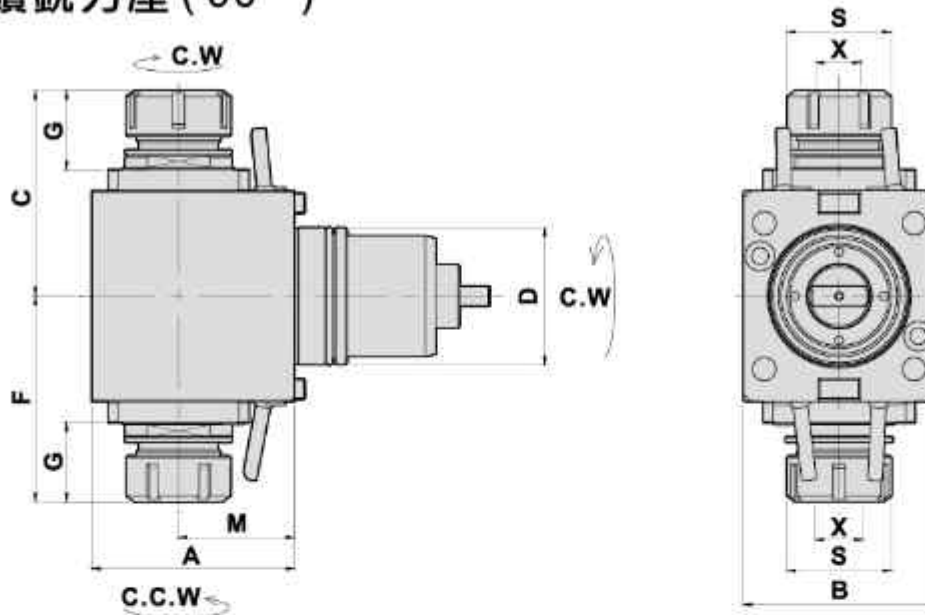
DIMENSIONS

Models	D	X Capacity	S	Maximum R.P.M.	A	B	C	C1	E	E1	M	Code No.	Order No.	(Kg) Weight
SUPER-WT-150 SUPER-WY-250L	65	1st-ER20 2nd-ER32	35 50	5000	96	91	84	93	58	60	55	2651GJ-000	SP-WY-250L- DF65NA-32-20-55D	7.8

RADIAL MILLING AND DRILLING HEAD

TYPE NAKAMURA

徑向雙頭鑽銑刀座 (90°)



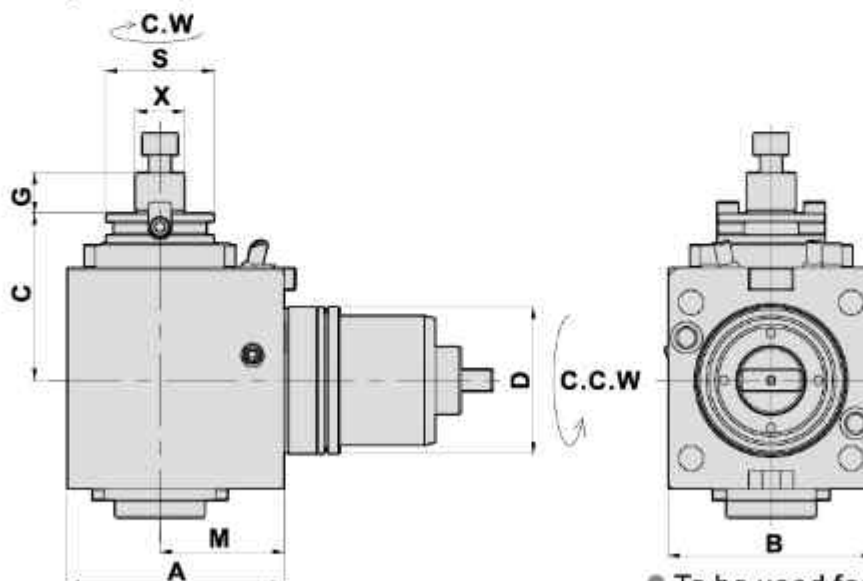
- To be used for collet DIN 6499
- External coolant supply
- Collet is not included

DIMENSIONS

Models	D	X Capacity	S	Maximum R.P.M.	A	B	C	F	G	M	Code No.	Order No.	(Kg) Weight
SUPER-WT-150 SUPER-WY-250L	65	2-20 ER32	50	5000	96	91	97.5	97.5	37.5	55	2651GM-000	SP-WY-250L- DF65NA-32-55D	8.1

RADIAL SHELL END MILLING CUTTER

徑向銑削刀座 (90°)



- To be used for collet DIN 6499
- External coolant supply
- Collet is not included

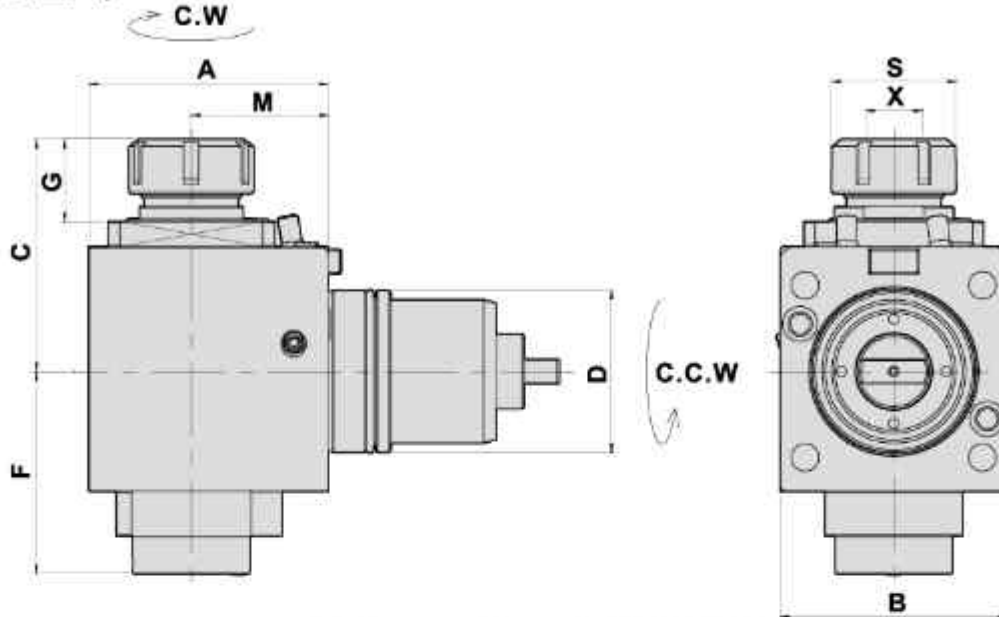
DIMENSIONS

Models	D	X DIN 6358	S	Maximum R.P.M.	A	B	C	G	M	Code No.	Order No.	(Kg) Weight
SUPER-WT-150 SUPER-WY-250L	65	22	48	5000	96	91	74	18	55	2651GD-000	DF65NA-22C-55-S	7.7

RADIAL MILLING AND DRILLING HEAD

TYPE NAKAMURA

徑向鑽銑刀座 (90°)



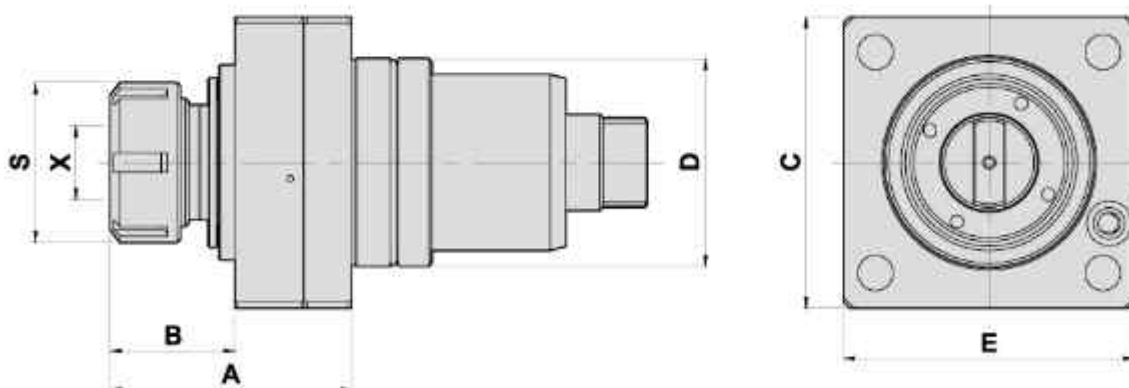
- To be used for collet DIN 6499
- Internal coolant supply: 50bar 中心出水
- Collet is not included

DIMENSIONS

Models	D	X Capacity	S	Maximum R.P.M.	A	B	C	F	G	M	Code No.	Order No.	(Kg) Weight
SUPER-WT-150 SUPER-WY-250L	65	2-20 ER32	50	5000	96	91	93	81	33	55	2651GE-000	SP-WT-150-CW-DF65NA-32-55-S	7.7
	65	2-20 ER32	50	5000	96	91	93	81	33	55	2651GK-000	SP-WY-250L-CW-DF65NA-32-55	7.7

AXIAL MILLING AND DRILLING HEAD

軸向鑽銑刀座 (0°)



- To be used for collet DIN 6499
- Internal coolant supply: 15bar 中心出水
- Collet is not included

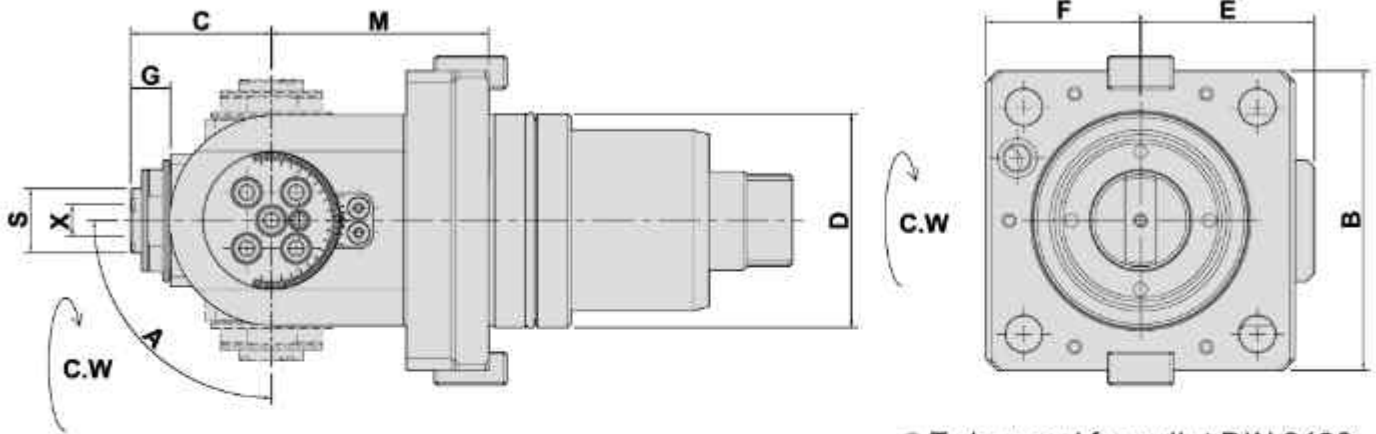
DIMENSIONS

Models	D	X Capacity	S	Maximum R.P.M.	A	B	C	E	Code No.	Order No.	(Kg) Weight
SUPER-WT-150 SUPER-WY-250L	65	2-20 ER32	50	6000	75.5	39	91	91	1651GF-000	SP-WY-250L-CW-DA65NA-ER32	3.7

ANGULAR HEAD

TYPE NAKAMURA

萬向鑽銑刀座



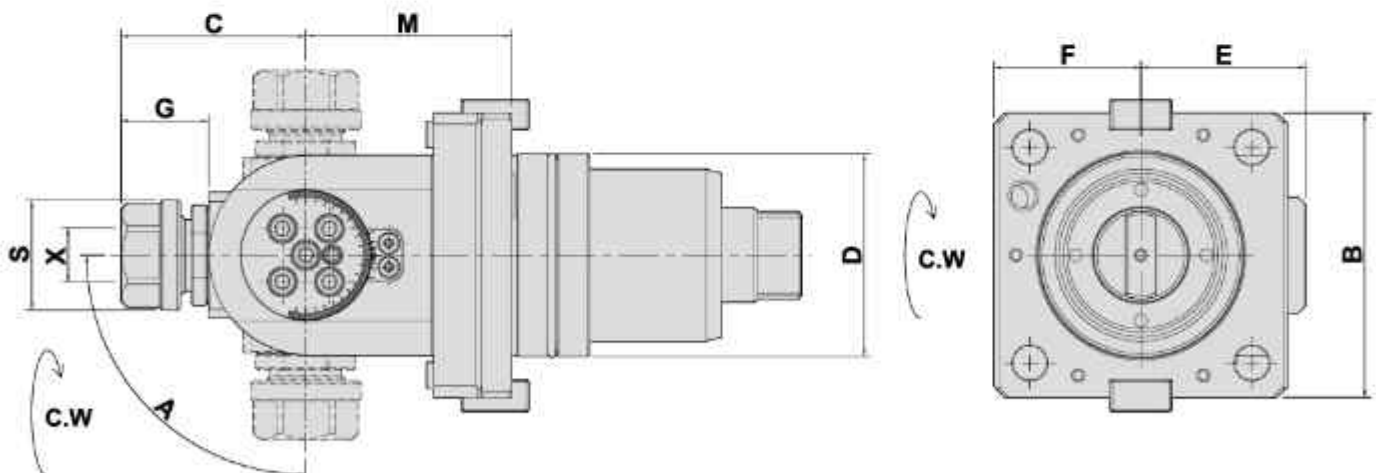
- To be used for collet DIN 6499
- External coolant supply
- Collet is not included

DIMENSIONS

Models	D	X Capacity	S	Maximum R.P.M.	A	B	C	E	F	G	M	Code No.	Order No.	(Kg) Weight
SUPER-WT-150 SUPER-WY-250L	65	1-10 ER16A	19.5	5000	±90°	91	43	53	47	12	66	1651GK-000	SP-DA65NA -16BAC	4.8

ANGULAR HEAD

萬向鑽銑刀座



- To be used for collet DIN 6499
- External coolant supply
- Collet is not included

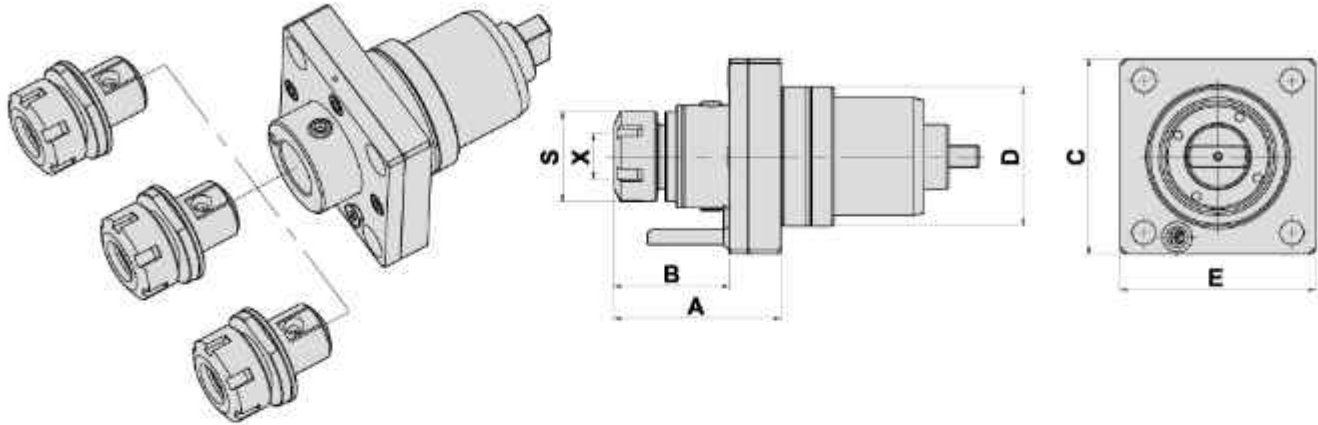
DIMENSIONS

Models	D	X Capacity	S	Maximum R.P.M.	A	B	C	E	F	G	M	Code No.	Order No.	(Kg) Weight
SUPER-WT-150 SUPER-WY-250L	65	1-13 ER 20	35	5000	±90°	91	59	53	47	28	66	1651GL-000	SP-DA65NA -20B	4.9

AXIAL MILLING AND DRILLING HEAD Quick-change Clamping System

TYPE NAKAMURA

軸向快換鑽銑刀座 (0°)



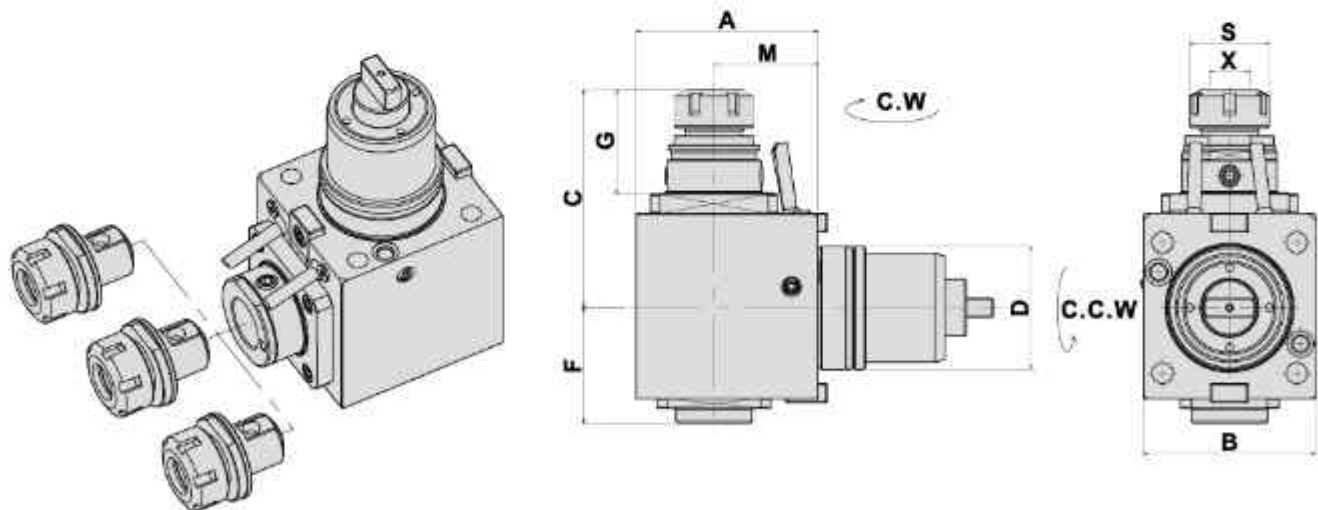
- To be used for collet DIN 6499
- External coolant supply
- Collet is not included

DIMENSIONS

Models	D	X Capacity	S	Maximum R.P.M.	A	B	C	E	Code No.	Order No.	(Kg) Weight
SUPER-WT-150 SUPER-WY-250L	65	1-16 ER25	42	6000	77.5	54	91	91	1651GQ-000	SP-WT150- DA65NA-ER25-S-QF	3.2

RADIAL MILLING AND DRILLING HEAD Quick-change Clamping System

徑向快換鑽銑刀座 (90°)



- To be used for collet DIN 6499
- External coolant supply
- Collet is not included

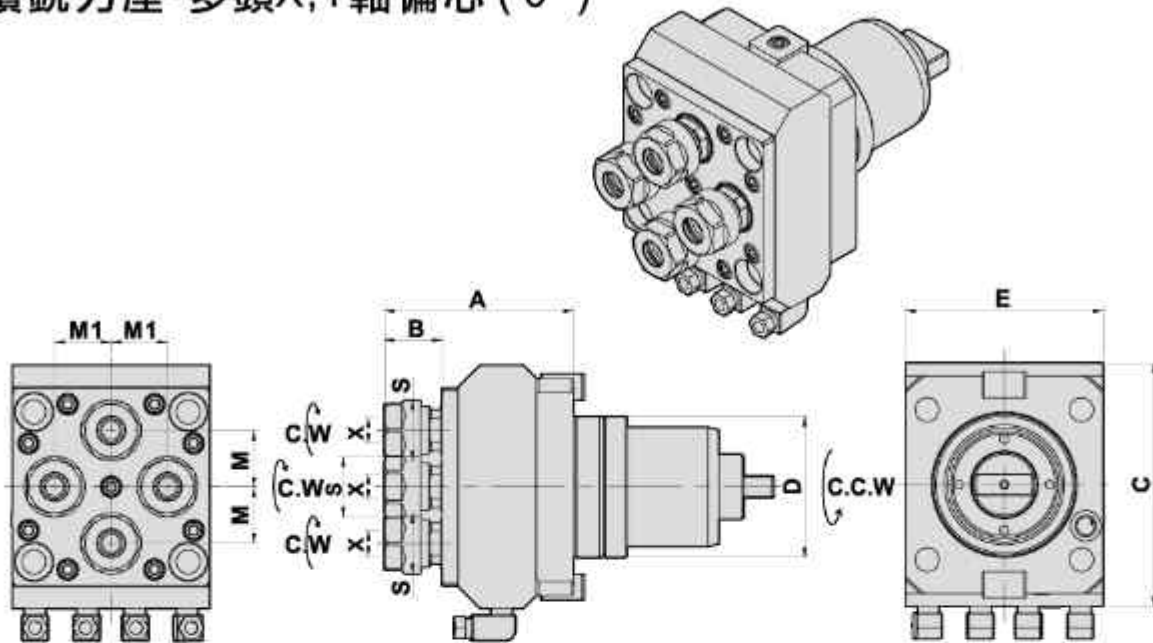
DIMENSIONS

Models	D	X Capacity	S	Maximum R.P.M.	A	B	C	F	G	M	Code No.	Order No.	(Kg) Weight
SUPER-WT-150 SUPER-WY-250L	65	1-16 ER25	42	5000	96	91	115	61	55	55	2651GR-000	SP-WT150- DF65NA-25-55-S-QF	8

AXIAL MILLING AND DRILLING HEAD MULTI HEADS-OFFSET

TYPE NAKAMURA

軸向鑽銑刀座-多頭X,Y軸偏心(0°)



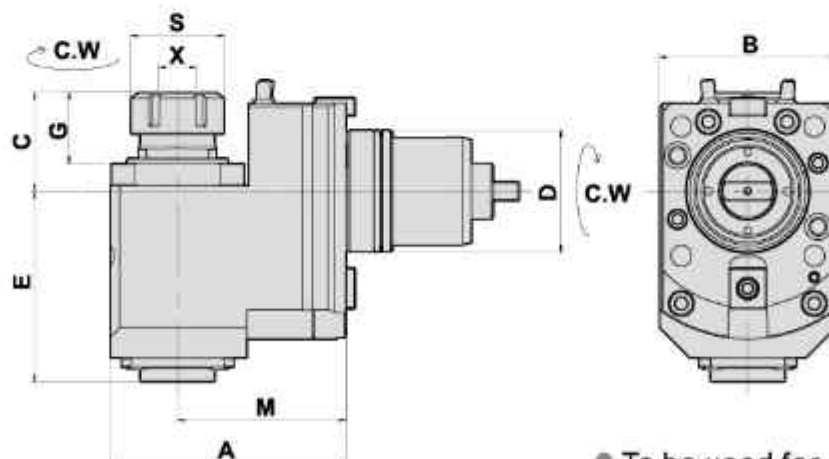
- To be used for collet DIN 6499
- External coolant supply
- Collet is not included

DIMENSIONS

Models	D	X Capacity	S	Maximum R.P.M.	A	B	C	E	M	M1	Code No.	Order No.	(Kg) Weight
SUPER-WT-150 SUPER-WY-250L	65	1-10 ER16	28	6000	87	27	112	91	26	26	1651GX-000	SP-WT150- DA65NA-16x4-DYX	5.7

RADIAL MILLING AND DRILLING HEAD OFFSET

徑向後縮式鑽銑刀座(90°)



- To be used for collet DIN 6499
- External coolant supply
- Collet is not included

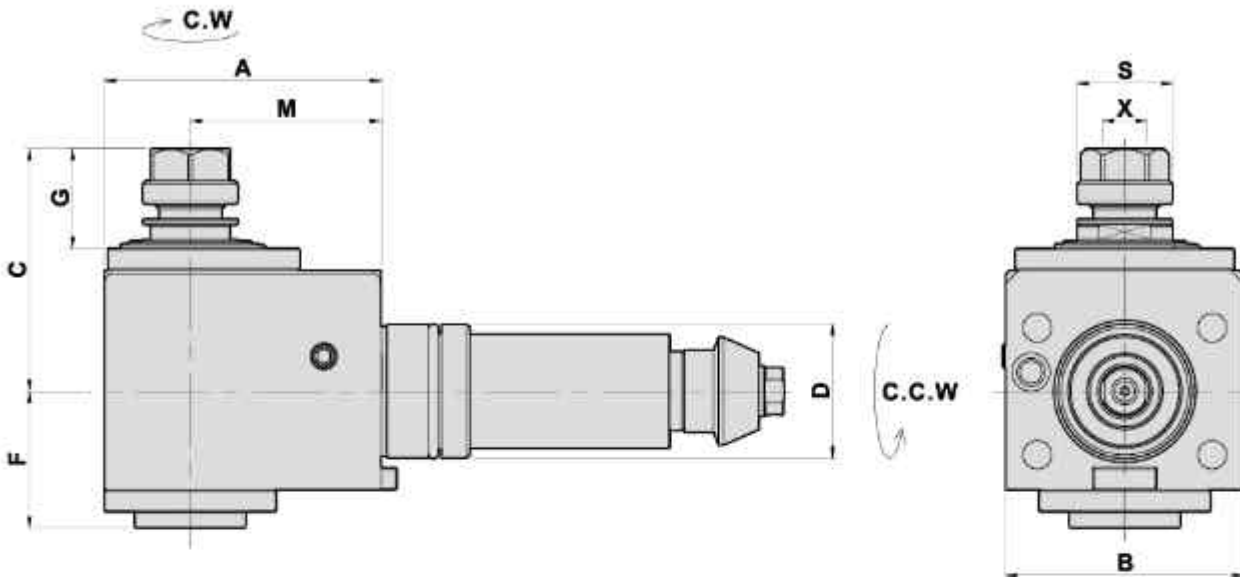
DIMENSIONS

Models	D	X Capacity	S	Maximum R.P.M.	A	B	C	E	G	M	Code No.	Order No.	(Kg) Weight
SUPER-WT-150 SUPER-WY-250L	65	1-20 ER32	50	5000	126	94	53	102	38	90	2651GG-000	SP-WT150- DB65NA-32-90	10.4

RADIAL MILLING AND DRILLING HEAD

TYPE NAKAMURA

徑向鑽銑刀座 (90°)



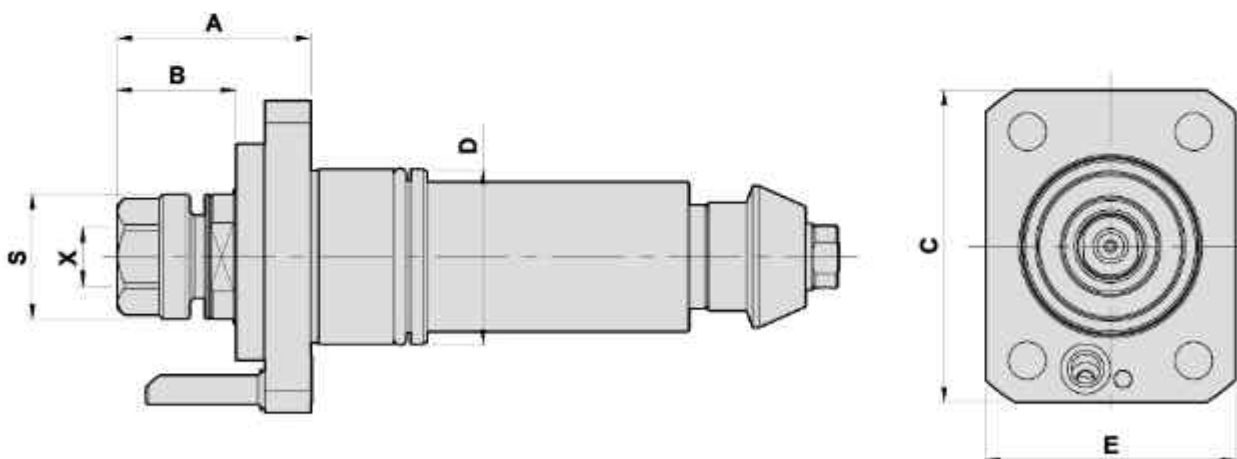
- To be used for collet DIN 6499
- External coolant supply
- Collet is not included

DIMENSIONS

Models	D	X Capacity	S	Maximum R.P.M.	A	B	C	F	G	M	Code No.	Order No.	(Kg) Weight
TW8	42	1-10 ER16	30	5000	87	75	76	43	31	60	2428GA-000	TW8-DF42NA-16-60	4.2

AXIAL MILLING AND DRILLING HEAD

軸向鑽銑刀座 (0°)



- To be used for collet DIN 6499
- External coolant supply
- Collet is not included

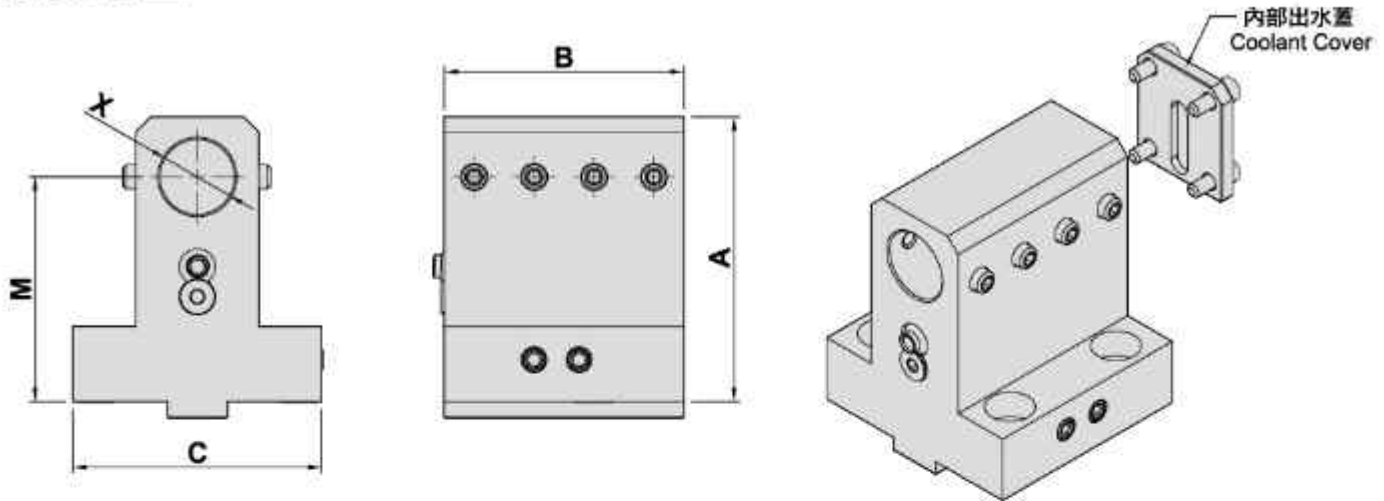
DIMENSIONS

Models	D	X Capacity	S	Maximum R.P.M.	A	B	C	E	Code No.	Order No.	(Kg) Weight
TW8	42	1-10 ER16	30	6000	47	29	75	60	1428GA-000	TW8-DA42NA-ER16	1.4

BORING BAR HOLDER

TYPE NAKAMURA

内孔刀座



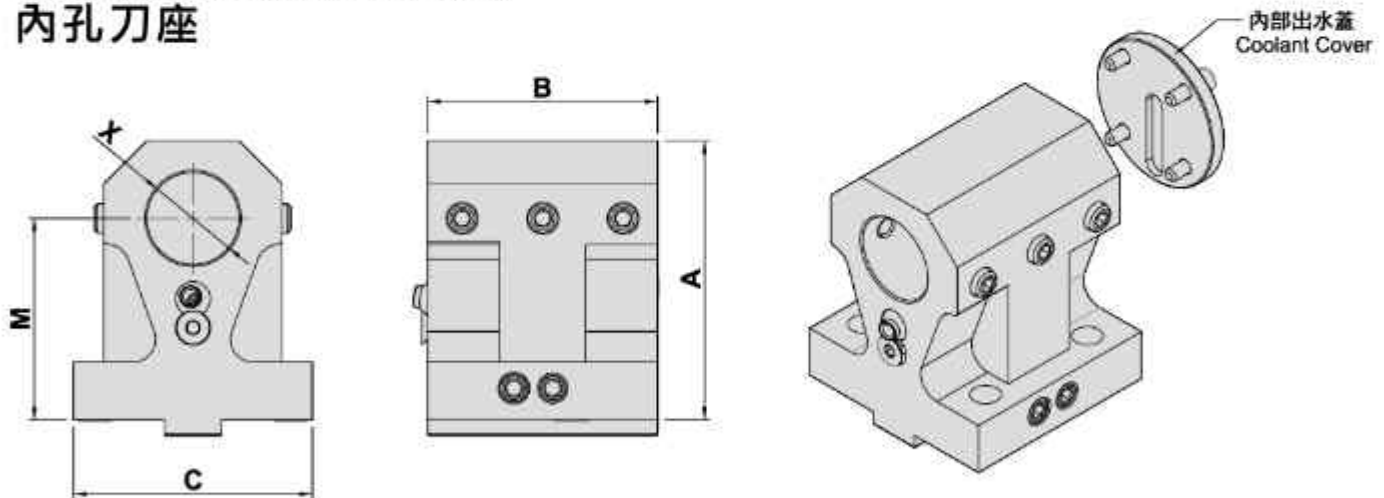
DIMENSIONS

- External coolant supply 外部出水
- Internal coolant supply 内部出水

Models	X	A	B	C	M	Code No.	Order No.	(Kg) Weight
WT150	25	95	80	83	75	306054-000	WT150-B25-75	2.8
TW8/WT100	25	77.5	62	79	60	306051-000	TW8-B25-60	1.7
NTJ-100	25	93.5	62	79	75	306056-000	NTJ-100-B25-75	2
NTJ-100	25	111.5	62	79	92.5	306057-000	NTJ-100-B25-92.5	2.3

BORING BAR HOLDER

内孔刀座



DIMENSIONS

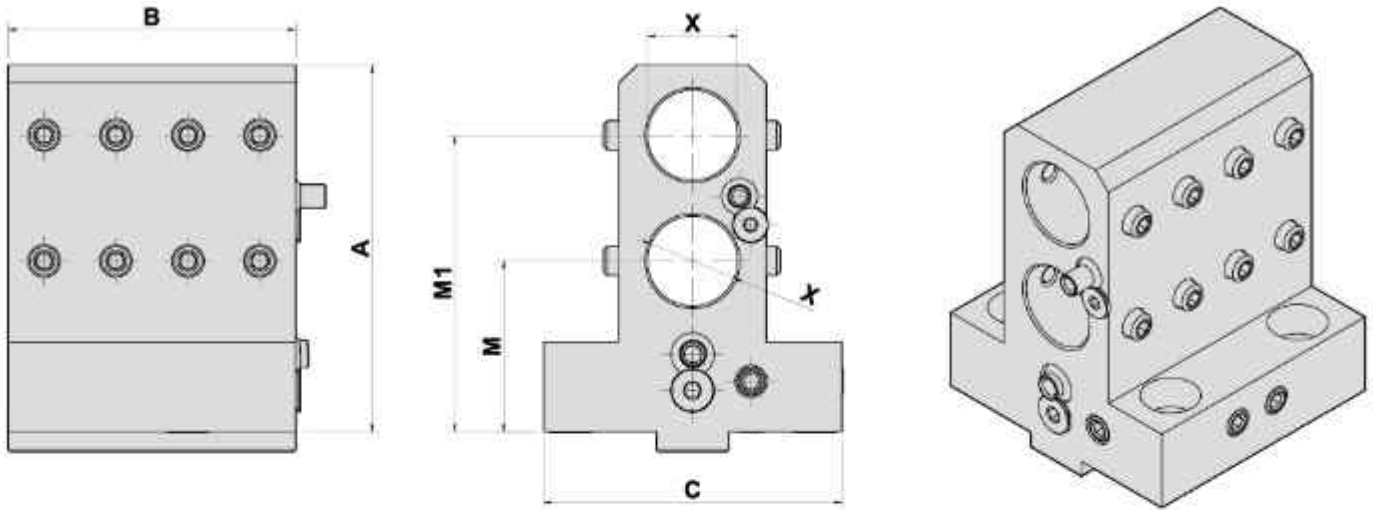
- External coolant supply 外部出水
- Internal coolant supply 内部出水

Models	X	A	B	C	M	Code No.	Order No.	(Kg) Weight
TW8/WT100	32	86	62	79	60	307055-000	TW8-B32-60	1.8
TW8/WT100	32	101	62	79	75	307057-000	WT100-B32-75	2.2
WT150	32	97	80	83	70	307052-000	WT-150-B32-70	3
WT300	32	122	100	96	90	307056-000	WT-300-W2417	5.1

DOUBLE BORING BAR HOLDER

TYPE NAKAMURA

雙內孔刀座



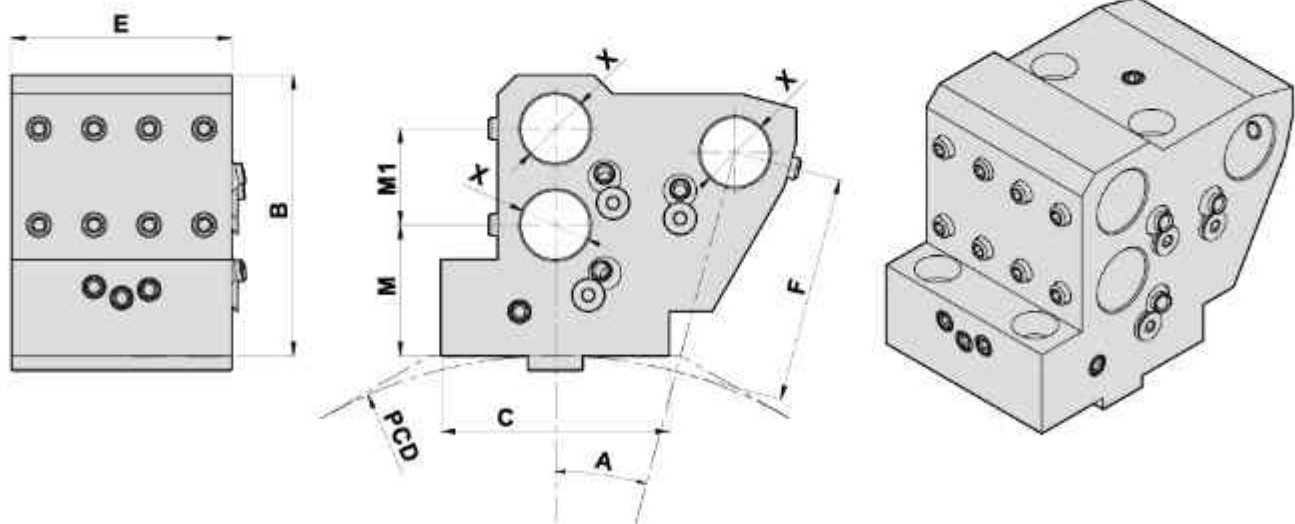
DIMENSIONS

● External coolant supply 外部出水

Models	X	A	B	C	M	M1	Code No.	Order No.	(Kg) Weight
WT150	25	102	80	83	47.5	82.5	306059-000	WT150-Z7418	2.7
WT150	25	114.5	80	83	60	95	30605G-000	WT150-B25x2-95	2.9
WT100	25	111.5	62	79	57.5	92.5	306053-000	WT100-B25x2-92	2.4

TRIPLE BORING BAR HOLDER

三內孔刀座



DIMENSIONS

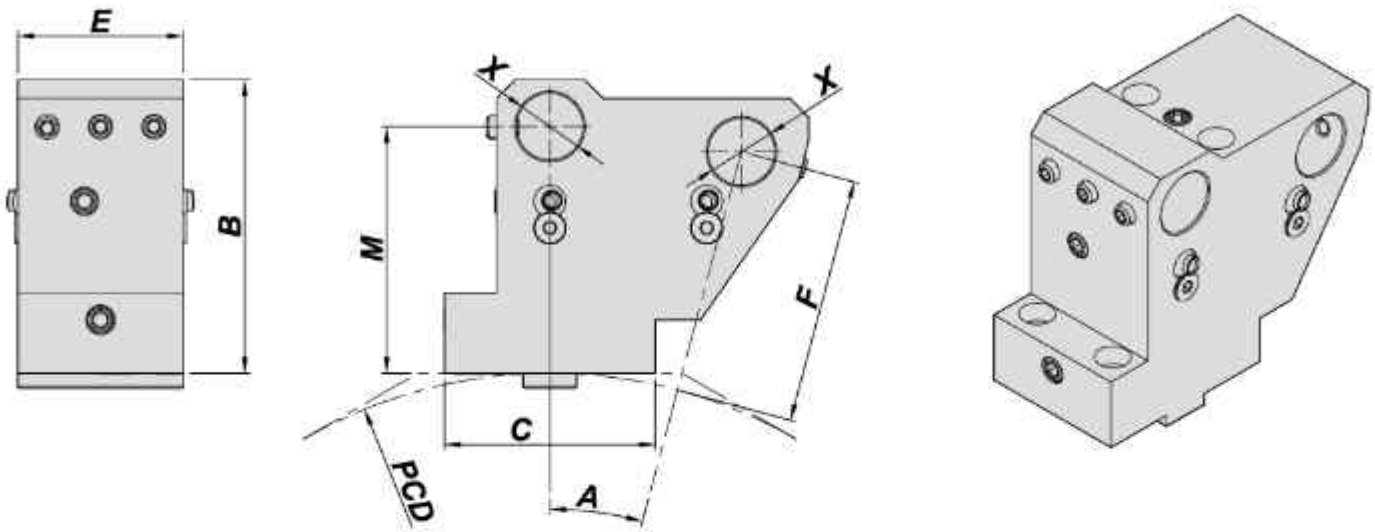
● External coolant supply 外部出水

Models	X	A	B	C	E	F	M	M1	PCD	Code No.	Order No.	(Kg) Weight
WT150	25	15°	102	83	80	82.5	47.5	35	340	306052-000	WT150-B25x3-R8453	5
NTJ-100	25	15°	111.5	78	62	92.5	57.5	35	300	30605A-000	NTJ-100-H21491	3.9

DOUBLE BORING BAR HOLDER

TYPE NAKAMURA

雙內孔刀座



DIMENSIONS

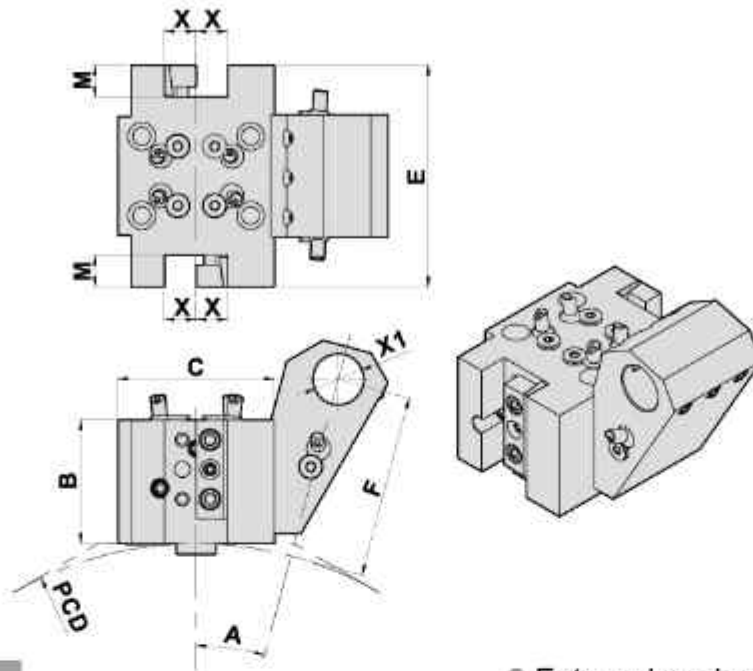
● External coolant supply 外部出水

Models	X	A	B	C	E	F	M	PCD	Code No.	Order No.	(Kg) Weight
NTJ-100	25	15°	110	79	62	92.5	92.5	370	30605C-000	NTJ-100-H22412	4.5
NTJ-100	25	15°	94	79	62	75	75	300	306058-000	NTJ-100-C22412	3.5
MX-100	25	15°	110	79	62	92.5	92.5	390	30605J-000	44NA-B25x2-92.5-24-390	4.5

DOUBLE SIDE TURNING HOLDER

TYPE NAKAMURA

雙側外徑刀座



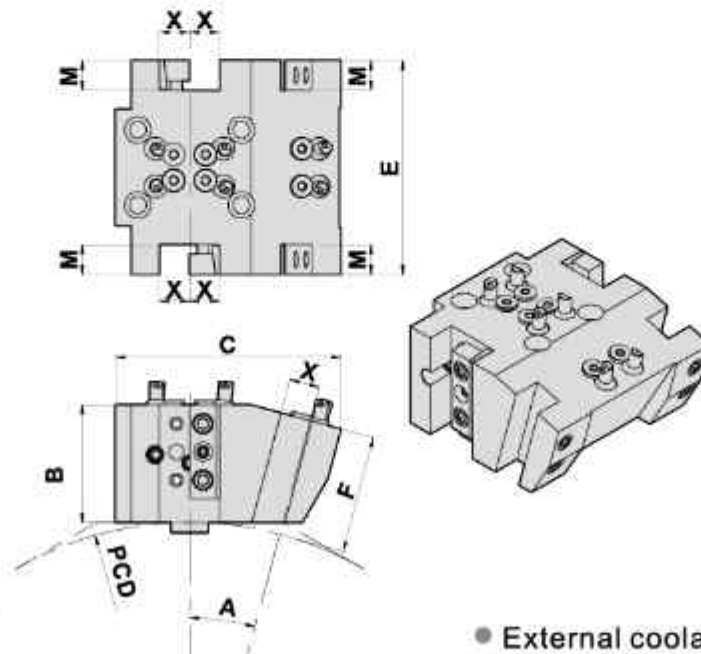
DIMENSIONS

● External coolant supply 外部出水

Models	A	X	X1	B	C	E	F	M	PCD	Code No.	Order No.	(Kg) Weight
WT-100/NTJ-100	15°	16	25	62.5	79	112	92.5	16	370	404051-000	H21470	5
WT-100/NTJ-100	15°	20	25	70	75	112	75	20	300	405056-000	C21470-C20x2	4.6
WT-100/NTJ-100	15°	20	25	82.5	76	112	92.5	16	300	405059-000	H21470-C20x2	5.4

DOUBLE SIDE TURNING HOLDER

雙側外徑刀座



DIMENSIONS

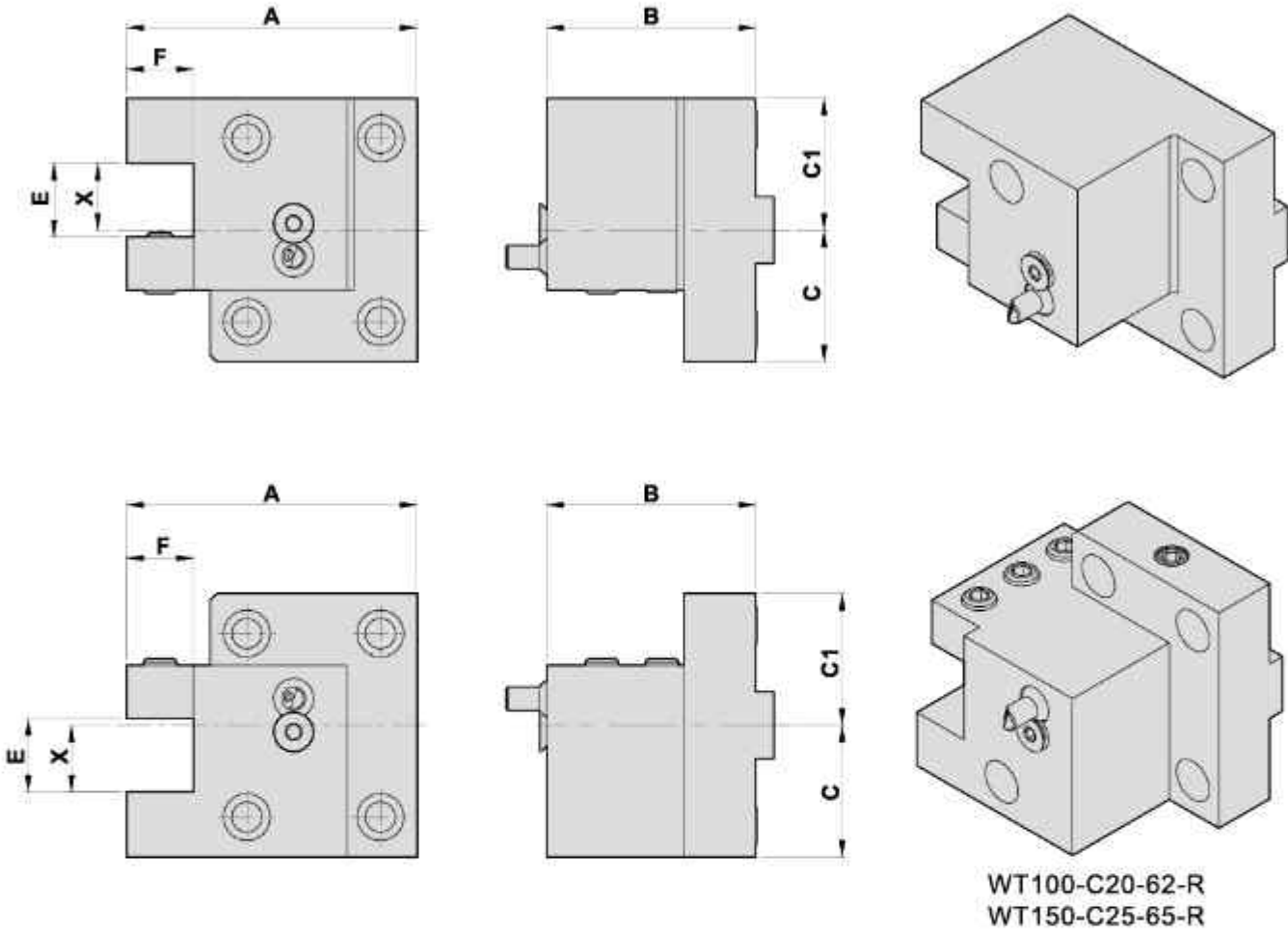
● External coolant supply 外部出水

Models	A	X	B	C	E	F	M	PCD	Code No.	Order No.	(Kg) Weight
WT-100/NTJ-100	15°	16	62.5	120	114	62.5	16	370	404052-000	H21478	4.8
MX-100	15°	16	62.5	118	114	62.5	16	390	404055-000	44NA-C16x4-62.5-24-390	5.4
WT-150	15°	20	65	120	146	65	20	340	40505B-000	WT150-C20x4-65	6.4
AS-200	15°	20	65	120	146	65	20	375	40505K-000	55NA-C20x4-65-24-375	6.4

TURNING HOLDER

TYPE NAKAMURA

外徑刀座



DIMENSIONS

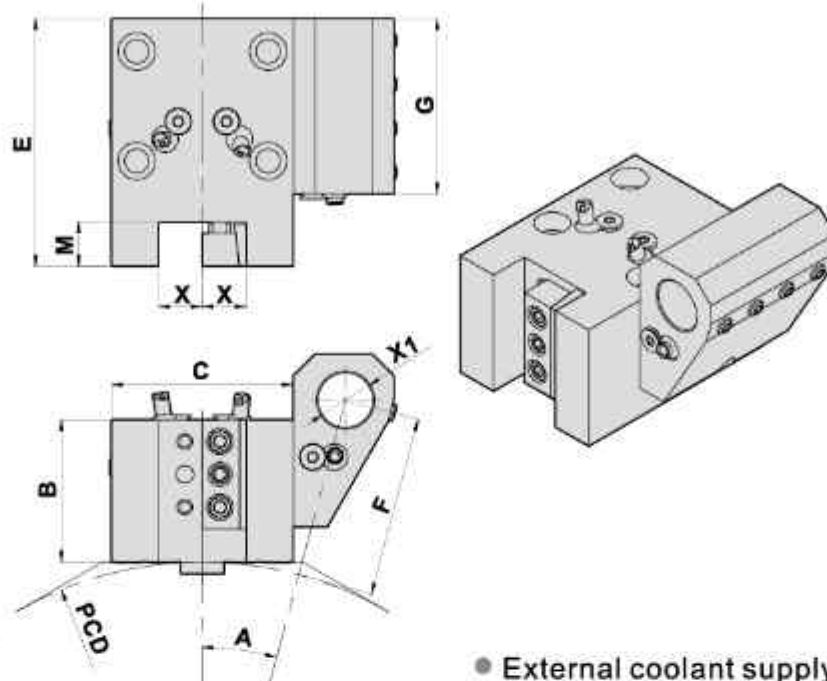
● External coolant supply 外部出水

Models	X	A	B	C	C1	E	F	Code No.	Order No.	(Kg) Weight
TW8/WT-100	20	87	62.5	39.5	39.5	22	20	405051-000	WT100-C20-62	2.1
TW8/WT-100	20	87	62.5	39.5	39.5	22	20	405054-000	WT100-C20-62-R	2.1
NTJ-100	20	87	82.5	39.5	39.5	22	20	405058-000	NTJ100-C21410-H20	2.9
WT-150	20	80	65	41.5	41.5	22	20	405055-000	WT150-C20-65	1.7
WT-150	25	100	65	41.5	46.5	27	25	406052-000	WT150-C25-65	2.7
WT-150	25	100	65	46.5	41.5	27	25	406053-000	WT150-C25-65-R	2.7
WT-300	25	126	70	48	60	27	25	406055-000	WT300-R7411-C25-70	4.2

TURNING HOLDER

TYPE NAKAMURA

外徑刀座



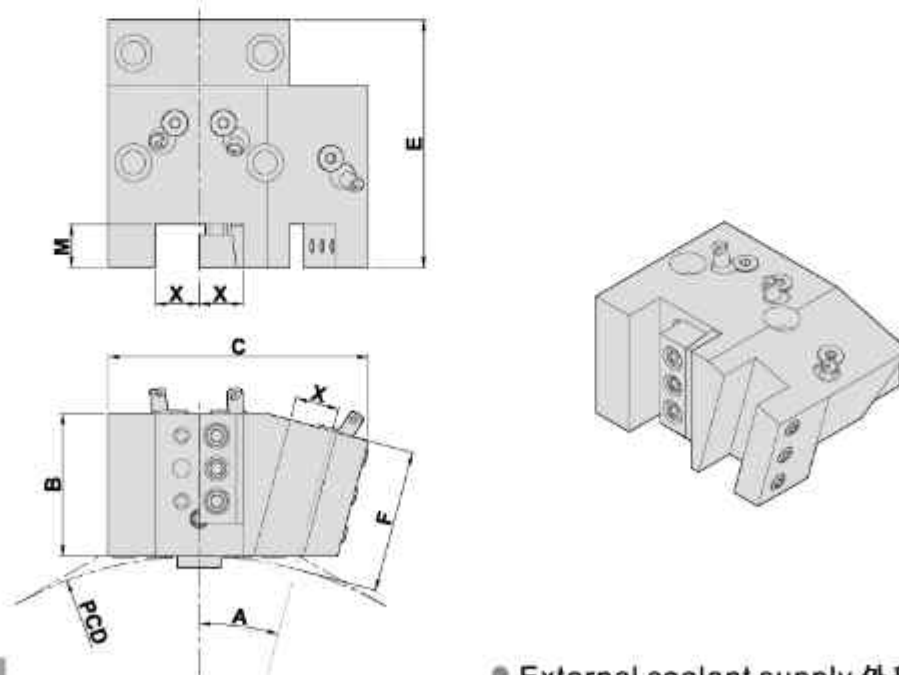
DIMENSIONS

● External coolant supply 外部出水

Models	A	X	X1	B	C	E	F	G	M	PCD	Code No.	Order No.	(Kg) Weight
WT-150	15°	20	25	65	83	113	82.5	80	20	340	405052-000	WT150-R8451-C20	5.5
WT-300	15°	20	25	70	96	113	97.5	100	20	365	40505C-000	WT300-R2451-C20xB25	8.3

TURNING HOLDER

外徑刀座



DIMENSIONS

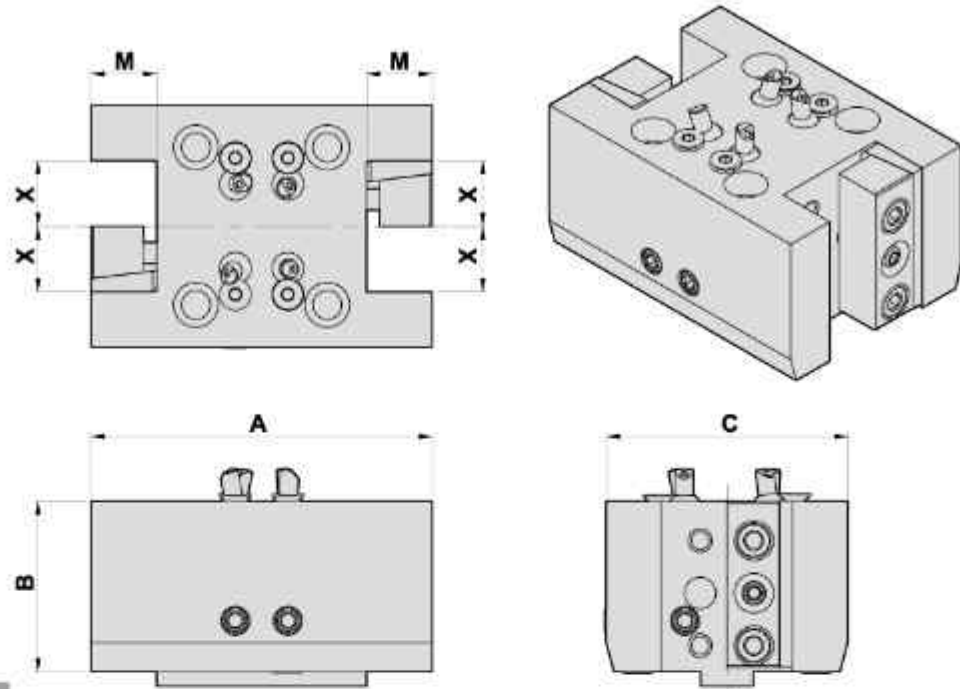
● External coolant supply 外部出水

Models	A	X	B	C	E	F	M	PCD	Code No.	Order No.	(Kg) Weight
WT-150	15°	20	65	118.7	113	65	20	340	405053-000	WT150-R1452-C20x2	4.2
AS-200	15°	20	65	120	113	65	20	375	40505F-000	AS200-C20x2-65-24	4.1

DOUBLE SIDE TURNING HOLDER

TYPE NAKAMURA

雙側外徑刀座

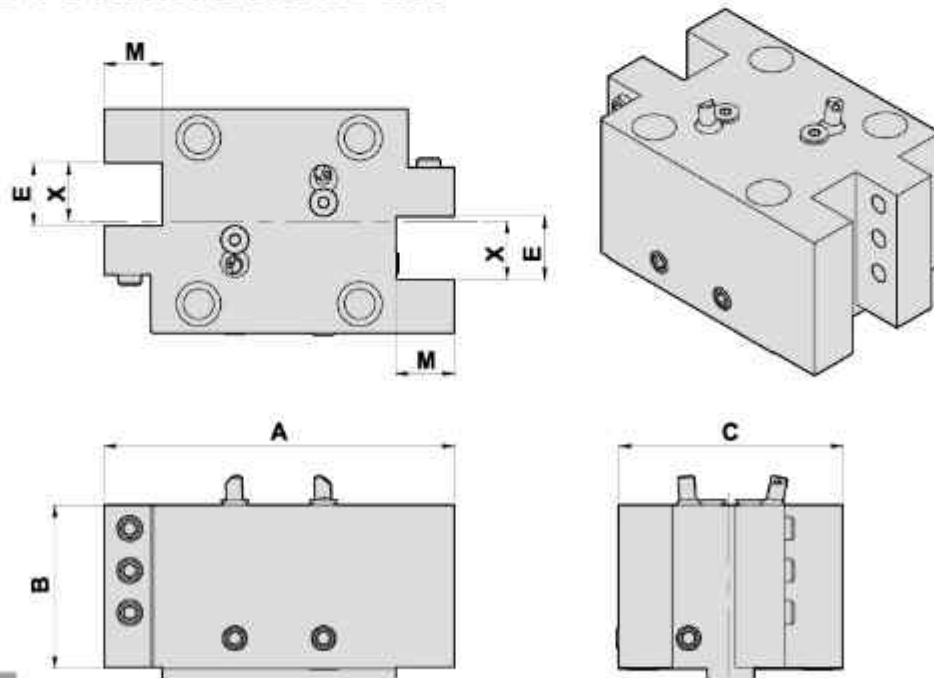


DIMENSIONS

Models	X	A	B	C	M	Code No.	Order No.	(Kg) Weight
WT-150	25	130	65	92	25	406057-000	WT150-C25x2-65	5.1

DOUBLE SIDE TURNING HOLDER

雙側外徑刀座



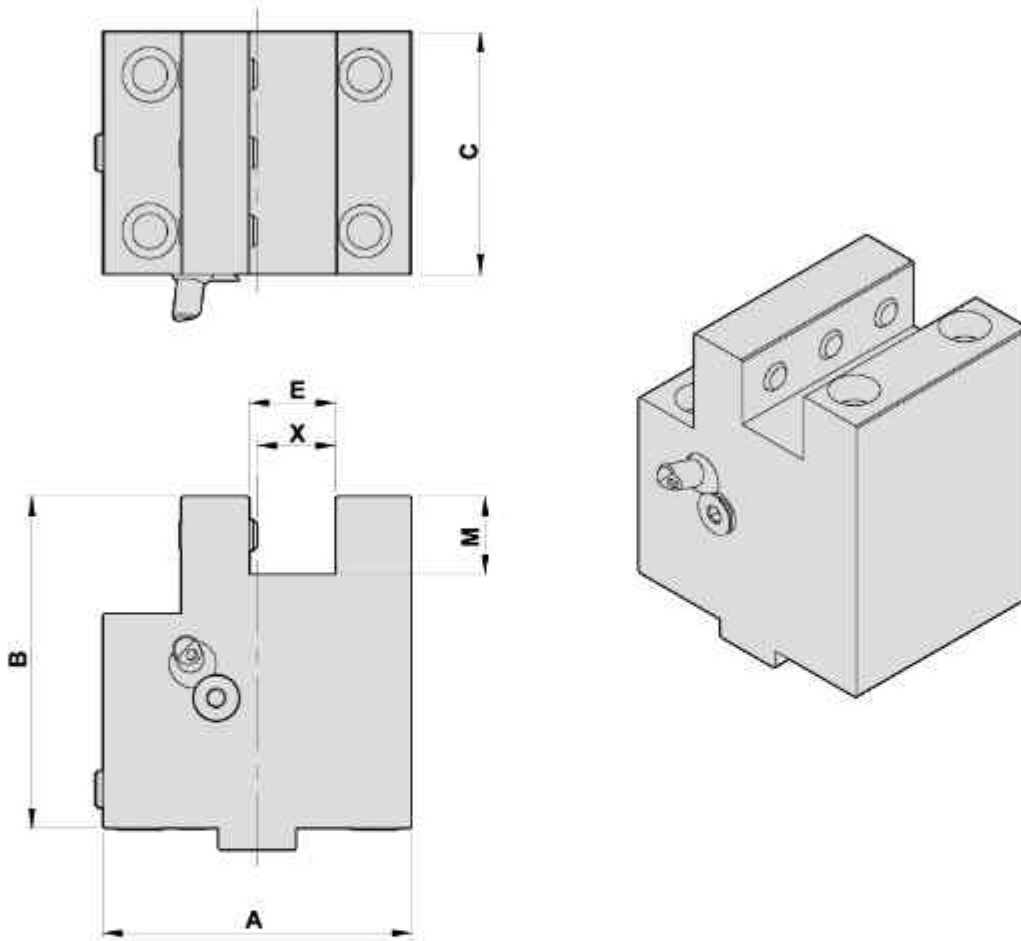
DIMENSIONS

Models	X	A	B	C	E	M	Code No.	Order No.	(Kg) Weight
WT-300	25	150	70	96	27	25	406056-000	WT300-C7452-C25x2	6.6

FACING HOLDER

TYPE NAKAMURA

端面刀座



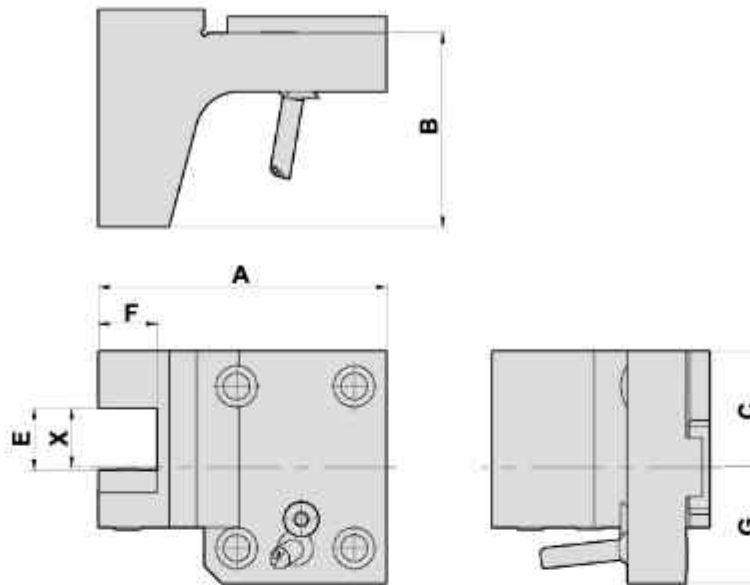
DIMENSIONS

Models	X	A	B	C	E	M	Code No.	Order No.	(Kg) Weight
NTJ-100	20	79	85	62	22	20	505052-000	NTJ-100-Z8415	2.7
WT-150	20	83	60	80	22	20	505051-000	WT150-F20-60	2.5
WT-150	25	91	70	80	27	25	506051-000	WT150-F25-70	3.2

CUTTING HOLDER

TYPE NAKAMURA

切斷刀座



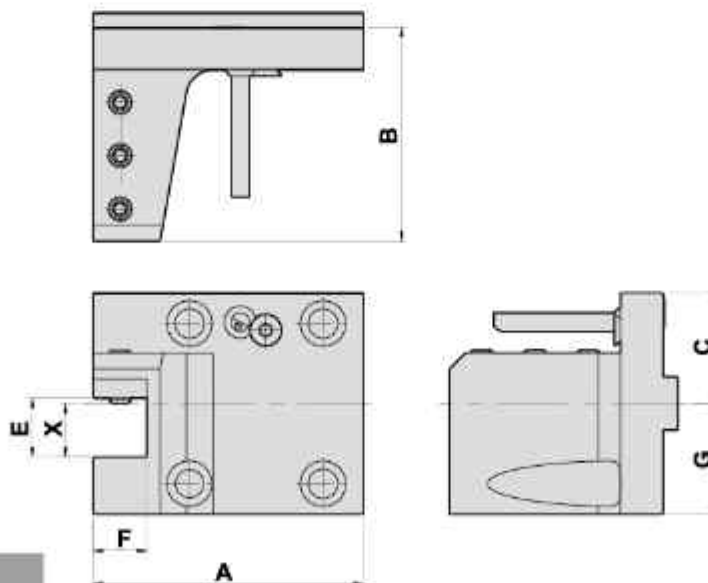
DIMENSIONS

● External coolant supply

Models	X	A	B	C	G	E	F	Code No.	Order No.	(Kg) Weight
WT-100	20	98	66	39.5	39.5	22	20	705051-000	WT100-R21430-R20	1.7
NTJ100	20	98	86	39.5	39.5	22	20	705055-000	NTJ100-R21430-H20	2.6
WT-150	20	101	80	41.5	41.5	22	20	705053-000	WT150-R1431-R20	1.8
WT-300	20	99	80	48	48	22	25	705057-000	WT300-W2431-R20	2.4
WT-150	25	106	80	46.5	41.5	27	25	706051-000	WT150-R1431-R25	2.5
WT-300	25	135	93	48	48	27	25	706053-000	WT300-R25-93	3.5

CUTTING HOLDER

切斷刀座



DIMENSIONS

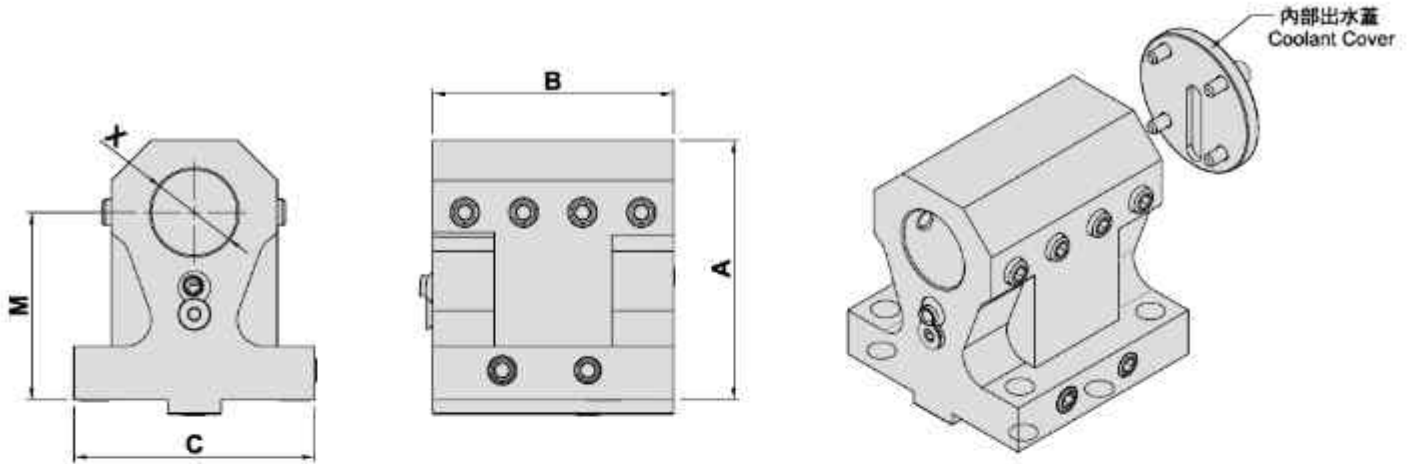
● External coolant supply

Models	X	A	B	C	G	E	F	Code No.	Order No.	(Kg) Weight
NTJ-100	20	98	86	39.5	39.5	22	20	705056-000	NTJ100-R21440-H20	2.5
WT-100	20	98	66	39.5	39.5	22	20	705054-000	WT100-C21440	1.7
WT-150	20	101	80	41.5	41.5	22	20	705052-000	WT150-R1432-R20-R	1.8
WT-300	20	99	80	48	48	22	20	705058-000	WT300-W2432-R20-R	2.5

BORING BAR HOLDER

TYPE NAKAMURA

内孔刀座



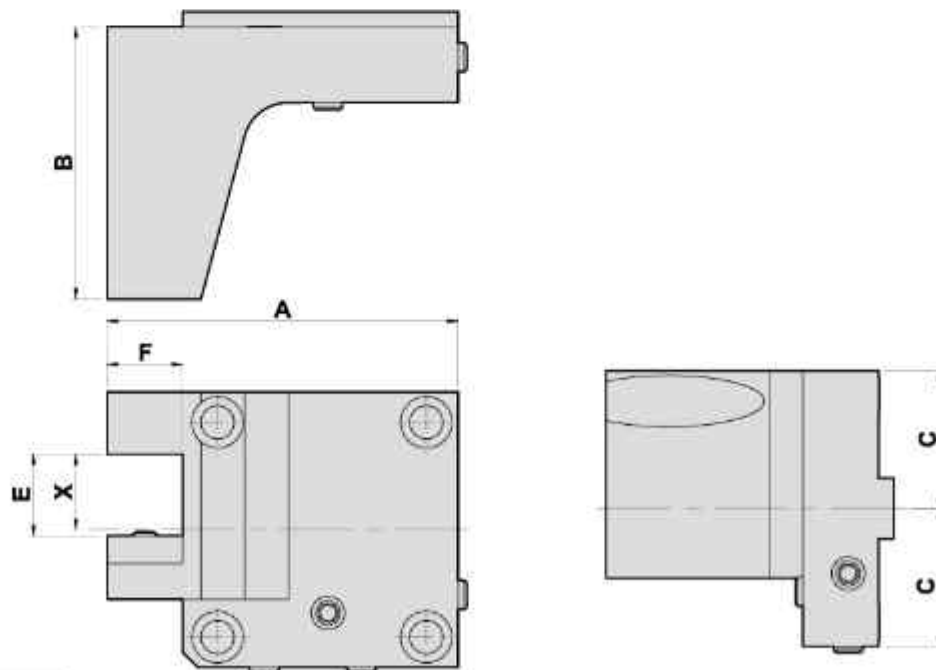
DIMENSIONS

- External coolant supply 外部出水
- Internal coolant supply 内部出水

Models		X	A	B	C	M	Code No.	Order No.	(Kg) Weight
SUPER-WT-150	inch	1.25"	3.82"	3.54"	3.54"	2.76"	3G1051-000	SP-WT-150-B31.75-70	3.6
	mm	32	97	90	90	70	307053-000	SP-WT-150-B32-70	3.6
SUPER-WY-250L	inch	1.5"	4.212"	3.622"	3.583"	2.953"	3H1051-000	SP-WT-150-B38.1-75	5.1
	mm	40	107	92	91	75	308051-000	SP-WT-150-B40-75	4.9

CUTTING HOLDERS

切斷刀座



DIMENSIONS

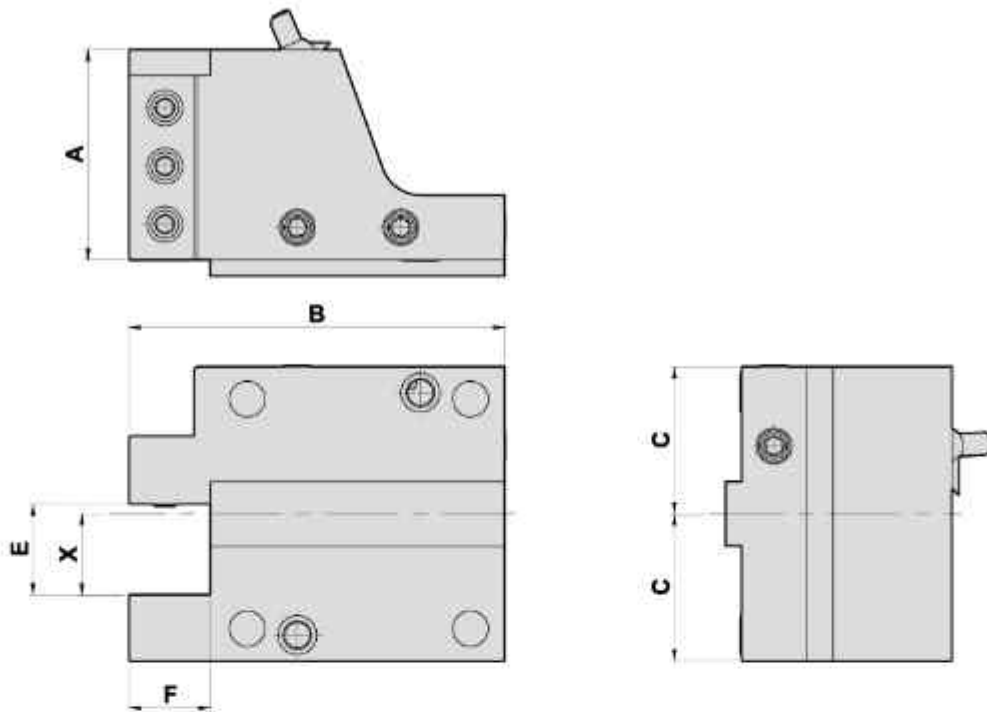
- External coolant supply

Models	A	B	C	E	F	X	Code No.	Order No.	(Kg) Weight
SUPER-WT-150 SUPER-WY-250L	116	90	45.5	27	25	25	706052-000	SP-WT150-R25	2.8

TURNING HOLDER

TYPE NAKAMURA

外徑刀座



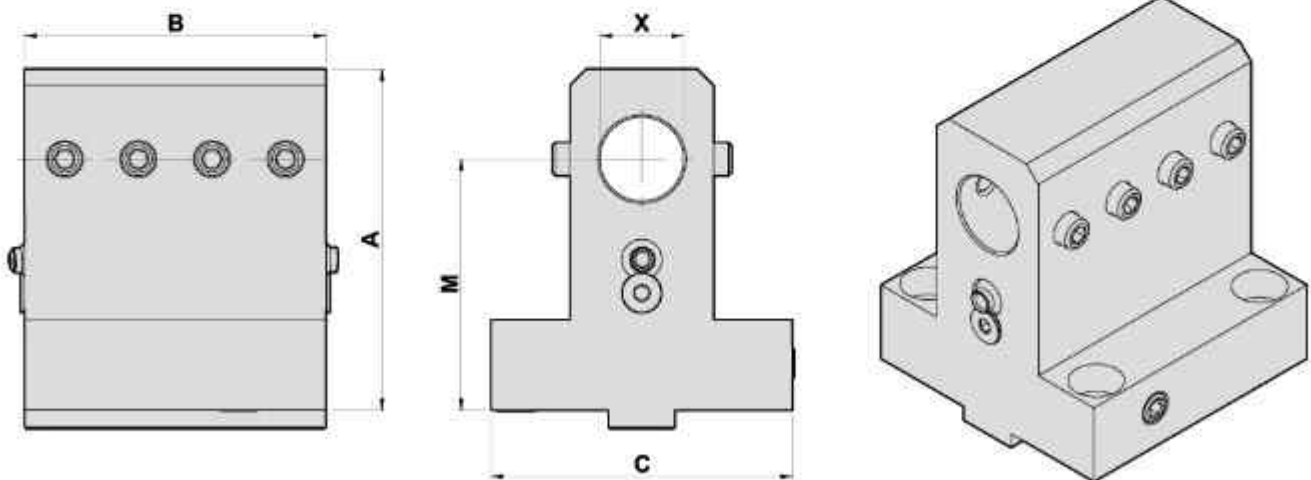
DIMENSIONS

● External coolant supply

Models	X	A	B	C	E	F	Code No.	Order No.	(Kg) Weight
SUPER-WT-150	25	65	116	45.5	28	25	406051-000	SP-WY-250L-C25-65	3.2
SUPER-WY-250L	25	75	121	45.5	28	25	406054-000	SP-WT-150-C25-75	3.6

BORING BAR HOLDER

內孔刀座



DIMENSIONS

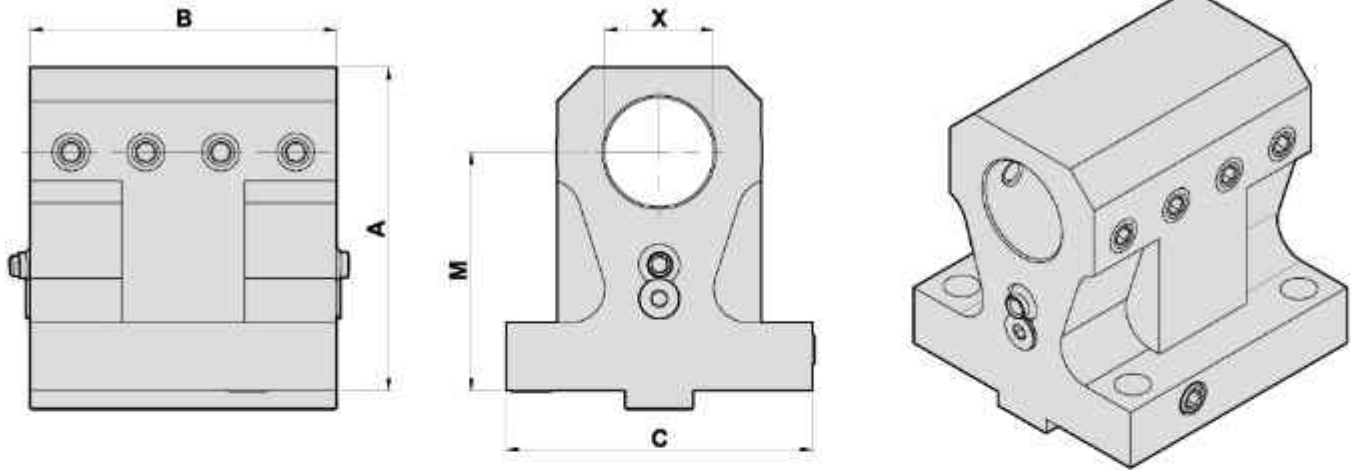
● External coolant supply

Models	X	A	B	C	M	Code No.	Order No.	(Kg) Weight
SUPER-WT-150 SUPER-WY-250L	25	102	90	90	75	306055-000	SP-WY-250L-B25-75	3.6

BORING BAR HOLDER

TYPE NAKAMURA

内孔刀座



DIMENSIONS

● External coolant supply

Models	X	A	B	C	M	Code No.	Order No.	(Kg) Weight
SUPER-WT-150 SUPER-WY-250L	32	95	90	90	70	307051-000	SP-WY-250L-B32-70	3.5